

Mouse Gata6 Antibody (C-term)

Purified Rabbit Polyclonal Antibody (Pab)

Catalog # AP20864c

Product Information

Application	WB, E
Primary Accession	Q61169
Reactivity	Human, Rat, Mouse
Host	Rabbit
Clonality	Polyclonal
Isotype	Rabbit IgG
Clone Names	RB50933

Additional Information

Other Names	Transcription factor GATA-6, GATA-binding factor 6, Gata6
Target/Specificity	This Mouse Gata6 antibody is generated from a rabbit immunized with a KLH conjugated synthetic peptide between 485-518 amino acids from the C-terminal region of human Mouse Gata6.
Dilution	WB~~1:1000 E~~Use at an assay dependent concentration.
Format	Purified polyclonal antibody supplied in PBS with 0.09% (W/V) sodium azide. This antibody is purified through a protein A column, followed by peptide affinity purification.
Storage	Maintain refrigerated at 2-8°C for up to 2 weeks. For long term storage store at -20°C in small aliquots to prevent freeze-thaw cycles.
Precautions	Mouse Gata6 Antibody (C-term) is for research use only and not for use in diagnostic or therapeutic procedures.

Protein Information

Background

Transcriptional activator that regulates SEMA3C and PLXNA2. Involved in gene regulation specifically in the gastric epithelium (By similarity).

References

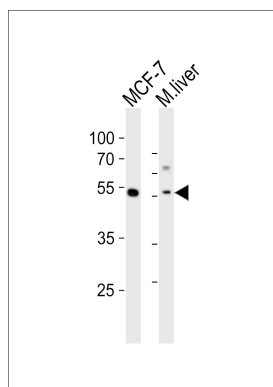
Morrissey E.E.,et al.Dev. Biol. 177:309-322(1996).
Katsuoka F.,et al.Submitted (AUG-1999) to the EMBL/GenBank/DDBJ databases.

Carninci P., et al. *Science* 309:1559-1563(2005).

Mural R.J., et al. Submitted (SEP-2005) to the EMBL/GenBank/DDBJ databases.

Narita N., et al. *Genomics* 36:345-348(1996).

Images



Western blot analysis of lysates from MCF-7 cell line, mouse liver tissue lysate (from left to right), using Gata6 Antibody (C-term)(Cat. #AP20864c). AP20864c was diluted at 1:1000 at each lane. A goat anti-rabbit IgG H&L(HRP) at 1:10000 dilution was used as the secondary antibody. Lysates at 20ug per lane.

Please note: All products are 'FOR RESEARCH USE ONLY. NOT FOR USE IN DIAGNOSTIC OR THERAPEUTIC PROCEDURES'.