

OTX2 Antibody (C-term)

Purified Rabbit Polyclonal Antibody (Pab)

Catalog # AP20865c

Product Information

Application	WB, IHC-P, E
Primary Accession	P32243
Reactivity	Human, Rat, Mouse
Host	Rabbit
Clonality	Polyclonal
Isotype	Rabbit IgG
Clone Names	RB50907
Calculated MW	31636

Additional Information

Gene ID	5015
Other Names	Homeobox protein OTX2, Orthodenticle homolog 2, OTX2
Target/Specificity	This OTX2 antibody is generated from a rabbit immunized with a KLH conjugated synthetic peptide between 201-226 amino acids from the C-terminal region of human OTX2.
Dilution	WB~~1:1000 IHC-P~~1:100~500 E~~Use at an assay dependent concentration.
Format	Purified polyclonal antibody supplied in PBS with 0.09% (W/V) sodium azide. This antibody is purified through a protein A column, followed by peptide affinity purification.
Storage	Maintain refrigerated at 2-8°C for up to 2 weeks. For long term storage store at -20°C in small aliquots to prevent freeze-thaw cycles.
Precautions	OTX2 Antibody (C-term) is for research use only and not for use in diagnostic or therapeutic procedures.

Protein Information

Name	OTX2
Function	Transcription factor probably involved in the development of the brain and the sense organs. Can bind to the bicoid/BCD target sequence (BTS): 5'-TCTAATCCC-3'.
Cellular Location	Nucleus.

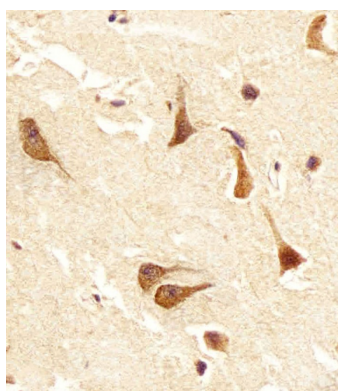
Background

Probably plays a role in the development of the brain and the sense organs. Can bind to the BCD target sequence (BTS): 5'-TCTAATCCC-3'.

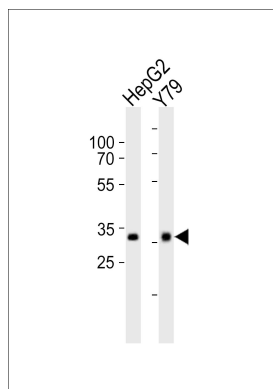
References

Simeone A., et al. *EMBO J.* 12:2735-2747(1993).
Perrault I., et al. Submitted (AUG-2000) to the EMBL/GenBank/DDBJ databases.
Fong S.L., et al. *Curr. Eye Res.* 18:283-291(1999).
Ota T., et al. *Nat. Genet.* 36:40-45(2004).
Mural R.J., et al. Submitted (JUL-2005) to the EMBL/GenBank/DDBJ databases.

Images



Immunohistochemical analysis of paraffin-embedded H. brain section using OTX2 Antibody (C-term)(Cat#AP20865c). AP20865c was diluted at 1:25 dilution. A undiluted biotinylated goat polyvalent antibody was used as the secondary, followed by DAB staining.



Western blot analysis of lysates from HepG2, Y79 cell line (from left to right), using OTX2 Antibody (C-term)(Cat. #AP20865c). AP20865c was diluted at 1:1000 at each lane. A goat anti-rabbit IgG H&L(HRP) at 1:10000 dilution was used as the secondary antibody. Lysates at 20ug per lane.

Please note: All products are 'FOR RESEARCH USE ONLY. NOT FOR USE IN DIAGNOSTIC OR THERAPEUTIC PROCEDURES'.