

## (Mouse) Srf Antibody (C-term)

Purified Rabbit Polyclonal Antibody (Pab)

Catalog # AP20866c

### Product Information

---

Application	WB, E
Primary Accession	<a href="#">Q9JL73</a>
Reactivity	Human, Rat, Mouse
Host	Rabbit
Clonality	Polyclonal
Isotype	Rabbit IgG
Clone Names	RB51155
Calculated MW	51247

### Additional Information

---

Gene ID	20807
Other Names	Serum response factor, SRF, Srf
Target/Specificity	This (Mouse) Srf antibody is generated from a rabbit immunized with a KLH conjugated synthetic peptide between 489-524 amino acids from the C-terminal region of human (Mouse) Srf.
Dilution	WB~~1:1000 E~~Use at an assay dependent concentration.
Format	Purified polyclonal antibody supplied in PBS with 0.09% (W/V) sodium azide. This antibody is purified through a protein A column, followed by peptide affinity purification.
Storage	Maintain refrigerated at 2-8°C for up to 2 weeks. For long term storage store at -20°C in small aliquots to prevent freeze-thaw cycles.
Precautions	(Mouse) Srf Antibody (C-term) is for research use only and not for use in diagnostic or therapeutic procedures.

### Protein Information

---

Name	Srf
Function	SRF is a transcription factor that binds to the serum response element (SRE), a short sequence of dyad symmetry located 300 bp to the 5' of the site of transcription initiation of some genes (such as FOS) (PubMed: <a href="#">24732378</a> ). Together with MRTFA transcription coactivator, controls expression of genes regulating the cytoskeleton during development, morphogenesis and cell migration (PubMed: <a href="#">12732141</a> , PubMed: <a href="#">19350017</a> , PubMed: <a href="#">24732378</a> ). The

SRF-MRTFA complex activity responds to Rho GTPase-induced changes in cellular globular actin (G- actin) concentration, thereby coupling cytoskeletal gene expression to cytoskeletal dynamics (PubMed:[24732378](#)). Required for cardiac differentiation and maturation (PubMed:[15169892](#)).

#### Cellular Location

Nucleus {ECO:0000255 | PROSITE-ProRule:PRU00251, ECO:0000269 | PubMed:19350017}

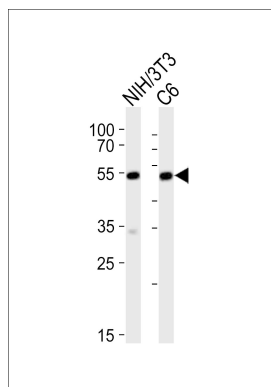
## Background

SRF is a transcription factor that binds to the serum response element (SRE), a short sequence of dyad symmetry located 300 bp to the 5' of the site of transcription initiation of some genes (such as FOS) (By similarity). Required for cardiac differentiation and maturation.

## References

Miwa T.,et al.Submitted (FEB-2000) to the EMBL/GenBank/DDBJ databases.  
Zhang X.,et al.J. Biol. Chem. 279:55626-55632(2004).  
Parlakian A.,et al.Mol. Cell. Biol. 24:5281-5289(2004).  
Zhang X.,et al.Biochem. Biophys. Res. Commun. 346:794-801(2006).  
Villen J.,et al.Proc. Natl. Acad. Sci. U.S.A. 104:1488-1493(2007).

## Images



Western blot analysis of lysates from mouse NIH/3T3;rat C6 cell line (from left to right), using Srf Antibody (C-term)(Cat. #AP20866c). AP20866c was diluted at 1:1000 at each lane. A goat anti-rabbit IgG H&L(HRP) at 1:10000 dilution was used as the secondary antibody. Lysates at 20ug per lane.

Please note: All products are 'FOR RESEARCH USE ONLY. NOT FOR USE IN DIAGNOSTIC OR THERAPEUTIC PROCEDURES'.