

Mouse Sbk1 Antibody (N-term)

Purified Rabbit Polyclonal Antibody (Pab)

Catalog # AP20874b

Product Information

Application	WB, E
Primary Accession	Q8QZX0
Reactivity	Human, Rat, Mouse
Host	Rabbit
Clonality	Polyclonal
Isotype	Rabbit IgG
Clone Names	RB44718
Calculated MW	45696

Additional Information

Gene ID	104175
Other Names	Serine/threonine-protein kinase SBK1, SH3-binding kinase 1, Sbk1, Sbk
Target/Specificity	This Mouse Sbk1 antibody is generated from a rabbit immunized with a KLH conjugated synthetic peptide between 65-98 amino acids from the N-terminal region of Mouse Sbk1.
Dilution	WB~~1:500-1:1000 E~~Use at an assay dependent concentration.
Format	Purified polyclonal antibody supplied in PBS with 0.09% (W/V) sodium azide. This antibody is purified through a protein A column, followed by peptide affinity purification.
Storage	Maintain refrigerated at 2-8°C for up to 2 weeks. For long term storage store at -20°C in small aliquots to prevent freeze-thaw cycles.
Precautions	Mouse Sbk1 Antibody (N-term) is for research use only and not for use in diagnostic or therapeutic procedures.

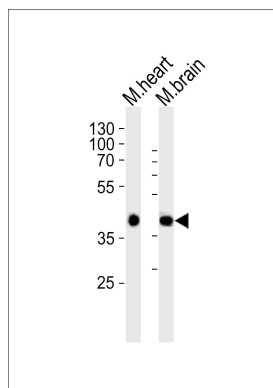
Protein Information

Name	Sbk1
Synonyms	Sbk
Function	May be involved in signal-transduction pathways related to the control of brain development.
Cellular Location	Cytoplasm.

Background

May be involved in signal-transduction pathways related to the control of brain development (By similarity).

Images



Western blot analysis of lysates from mouse heart, mouse brain tissue lysate (from left to right), using Sbk1 Antibody (N-term)(Cat. #AP20874b). AP20874b was diluted at 1:1000 at each lane. A goat anti-rabbit IgG H&L(HRP) at 1:10000 dilution was used as the secondary antibody. Lysates at 20ug per lane.

Please note: All products are 'FOR RESEARCH USE ONLY. NOT FOR USE IN DIAGNOSTIC OR THERAPEUTIC PROCEDURES'.