

# PrLZ Antibody (Center)

Purified Rabbit Polyclonal Antibody (Pab)

Catalog # AP20875a

## Product Information

---

Application	WB, E
Primary Accession	<a href="#">D0UFD5</a>
Other Accession	<a href="#">P55327</a>
Reactivity	Human, Mouse
Host	Rabbit
Clonality	Polyclonal
Isotype	Rabbit IgG
Clone Names	RB44504

## Additional Information

---

Other Names	Protein N8;Tumor protein D52
Target/Specificity	This PrLZ antibody is generated from a rabbit immunized with a KLH conjugated synthetic peptide between 100-132 amino acids from the Central region of human PrLZ.
Dilution	WB~~1:1000 E~~Use at an assay dependent concentration.
Format	Purified polyclonal antibody supplied in PBS with 0.09% (W/V) sodium azide. This antibody is purified through a protein A column, followed by peptide affinity purification.
Storage	Maintain refrigerated at 2-8°C for up to 2 weeks. For long term storage store at -20°C in small aliquots to prevent freeze-thaw cycles.
Precautions	PrLZ Antibody (Center) is for research use only and not for use in diagnostic or therapeutic procedures.

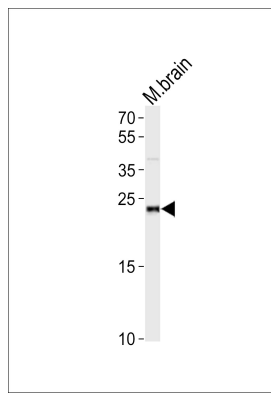
## Protein Information

---

## Images

---

Western blot analysis of lysate from mouse brain tissue lysate, using PrLZ Antibody (Center)(Cat. #AP20875a). AP20875a was diluted at 1:1000. A goat anti-rabbit IgG H&L(HRP) at 1:10000 dilution was used as the secondary antibody. Lysate at 20ug.



Please note: All products are 'FOR RESEARCH USE ONLY. NOT FOR USE IN DIAGNOSTIC OR THERAPEUTIC PROCEDURES'.