

# LIPI Antibody (Center)

Purified Rabbit Polyclonal Antibody (Pab)

Catalog # AP20877a

## Product Information

---

Application	WB, E
Primary Accession	<a href="#">Q6XZB0</a>
Reactivity	Human
Host	Rabbit
Clonality	Polyclonal
Isotype	Rabbit IgG
Clone Names	RB50932
Calculated MW	52922

## Additional Information

---

Gene ID	149998
Other Names	Lipase member I, LIPI, 311-, Cancer/testis antigen 17, CT17, LPD lipase, Membrane-associated phosphatidic acid-selective phospholipase A1-beta, mPA-PLA1 beta, LIPI, LPDL
Target/Specificity	This LIPI antibody is generated from a rabbit immunized with a KLH conjugated synthetic peptide between 224-258 amino acids from the Central region of human LIPI.
Dilution	WB~~1:1000 E~~Use at an assay dependent concentration.
Format	Purified polyclonal antibody supplied in PBS with 0.09% (W/V) sodium azide. This antibody is purified through a protein A column, followed by peptide affinity purification.
Storage	Maintain refrigerated at 2-8°C for up to 2 weeks. For long term storage store at -20°C in small aliquots to prevent freeze-thaw cycles.
Precautions	LIPI Antibody (Center) is for research use only and not for use in diagnostic or therapeutic procedures.

## Protein Information

---

Name	LIPI
Synonyms	LPDL
Function	Hydrolyzes specifically phosphatidic acid (PA) to produce 2- acyl lysophosphatidic acid (LPA; a potent bioactive lipid mediator) and fatty acid.

Does not hydrolyze other phospholipids, like phosphatidylserine (PS), phosphatidylcholine (PC) and phosphatidylethanolamine (PE) or triacylglycerol (TG).

<b>Cellular Location</b>	[Isoform 1]: Cell membrane. Secreted Note=May associate with lipid draft.
<b>Tissue Location</b>	Expressed in testis. Expressed exclusively at the connecting piece of the sperm.

## Background

---

Hydrolyzes specifically phosphatidic acid (PA) to produce 2-acyl lysophosphatidic acid (LPA; a potent bioactive lipid mediator) and fatty acid. Does not hydrolyze other phospholipids, like phosphatidylserine (PS), phosphatidylcholine (PC) and phosphatidylethanolamine (PE) or triacylglycerol (TG).

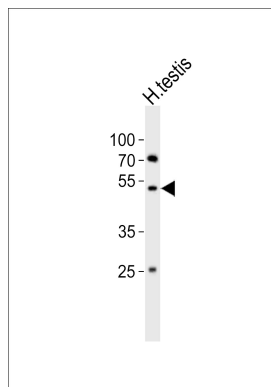
## References

---

Hiramatsu T.,et al.J. Biol. Chem. 278:49438-49447(2003).  
Wen X.-Y.,et al.Hum. Mol. Genet. 12:1131-1143(2003).  
Hattori M.,et al.Nature 405:311-319(2000).

## Images

---



Western blot analysis of lysate from human testis tissue lysate, using LIPI Antibody (Center)(Cat. #AP20877a). AP20877a was diluted at 1:1000. A goat anti-rabbit IgG H&L(HRP) at 1:10000 dilution was used as the secondary antibody. Lysate at 20ug.

Please note: All products are 'FOR RESEARCH USE ONLY. NOT FOR USE IN DIAGNOSTIC OR THERAPEUTIC PROCEDURES'.