

Mouse Gata6 Antibody (C-term)

Purified Rabbit Polyclonal Antibody (Pab)

Catalog # AP20878c

Product Information

Application	WB, E
Primary Accession	Q61169
Reactivity	Human, Rat, Mouse
Host	Rabbit
Clonality	Polyclonal
Isotype	Rabbit IgG
Clone Names	RB50934
Calculated MW	59307

Additional Information

Gene ID	14465
Other Names	Transcription factor GATA-6, GATA-binding factor 6, Gata6
Target/Specificity	This Mouse Gata6 antibody is generated from a rabbit immunized with a KLH conjugated synthetic peptide between 544-577 amino acids from the C-terminal region of Mouse Gata6.
Dilution	WB~~1:1000 E~~Use at an assay dependent concentration.
Format	Purified polyclonal antibody supplied in PBS with 0.09% (W/V) sodium azide. This antibody is purified through a protein A column, followed by peptide affinity purification.
Storage	Maintain refrigerated at 2-8°C for up to 2 weeks. For long term storage store at -20°C in small aliquots to prevent freeze-thaw cycles.
Precautions	Mouse Gata6 Antibody (C-term) is for research use only and not for use in diagnostic or therapeutic procedures.

Protein Information

Name	Gata6
Function	Transcriptional activator that regulates SEMA3C and PLXNA2 (PubMed: 19666519). May regulate genes that protect epithelial cells from bacterial infection (By similarity). Involved in gene regulation specifically in the gastric epithelium (By similarity). Involved in bone morphogenetic protein (BMP)-mediated cardiac-specific gene expression (PubMed: 15329343). Binds to BMP response element (BMPRE) DNA sequences within cardiac activating

regions (PubMed:[15329343](#)).

Cellular Location

Nucleus.

Tissue Location

Expressed in myocardium, vascular smooth muscle, gut epithelium, and osteoclasts

Background

Transcriptional activator that regulates SEMA3C and PLXNA2. Involved in gene regulation specifically in the gastric epithelium (By similarity).

References

Morrissey E.E.,et al.Dev. Biol. 177:309-322(1996).

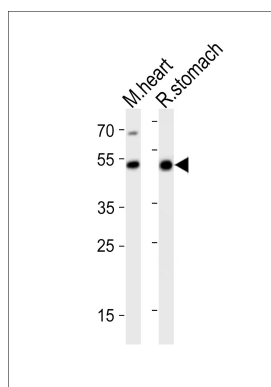
Katsuoka F.,et al.Submitted (AUG-1999) to the EMBL/GenBank/DDBJ databases.

Carninci P.,et al.Science 309:1559-1563(2005).

Mural R.J.,et al.Submitted (SEP-2005) to the EMBL/GenBank/DDBJ databases.

Narita N.,et al.Genomics 36:345-348(1996).

Images



Western blot analysis of lysates from mouse heart, rat stomach tissue lysate (from left to right), using Gata6 Antibody (C-term)(Cat. #AP20878c). AP20878c was diluted at 1:1000 at each lane. A goat anti-rabbit IgG H&L(HRP) at 1:10000 dilution was used as the secondary antibody. Lysates at 20ug per lane.

Please note: All products are 'FOR RESEARCH USE ONLY. NOT FOR USE IN DIAGNOSTIC OR THERAPEUTIC PROCEDURES'.