

# CAGE1 Antibody (N-term)

Purified Rabbit Polyclonal Antibody (Pab)

Catalog # AP20879b

## Product Information

---

<b>Application</b>	WB, E
<b>Primary Accession</b>	<a href="#">Q8TC20</a>
<b>Reactivity</b>	Human
<b>Host</b>	Rabbit
<b>Clonality</b>	Polyclonal
<b>Isotype</b>	Rabbit IgG
<b>Clone Names</b>	RB49261
<b>Calculated MW</b>	90250

## Additional Information

---

<b>Gene ID</b>	285782
<b>Other Names</b>	Cancer-associated gene 1 protein, CAGE-1, Cancer/testis antigen 3, CT3, CAGE1, CTAG3
<b>Target/Specificity</b>	This CAGE1 antibody is generated from a rabbit immunized with a KLH conjugated synthetic peptide between 2-35 amino acids from the N-terminal region of human CAGE1.
<b>Dilution</b>	WB~~1:1000 E~~Use at an assay dependent concentration.
<b>Format</b>	Purified polyclonal antibody supplied in PBS with 0.09% (W/V) sodium azide. This antibody is purified through a protein A column, followed by peptide affinity purification.
<b>Storage</b>	Maintain refrigerated at 2-8°C for up to 2 weeks. For long term storage store at -20°C in small aliquots to prevent freeze-thaw cycles.
<b>Precautions</b>	CAGE1 Antibody (N-term) is for research use only and not for use in diagnostic or therapeutic procedures.

## Protein Information

---

<b>Name</b>	CAGE1
<b>Synonyms</b>	CTAG3
<b>Tissue Location</b>	Testis-specific expression in normal tissues, but wide expression among cancer tissues and cell lines

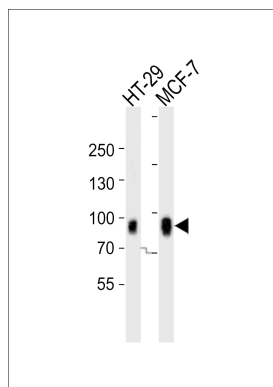
## References

---

Park S.,et al.Biochim. Biophys. Acta 1625:173-182(2003).  
Ota T.,et al.Nat. Genet. 36:40-45(2004).  
Mungall A.J.,et al.Nature 425:805-811(2003).  
Dephoure N.,et al.Proc. Natl. Acad. Sci. U.S.A. 105:10762-10767(2008).

## Images

---



Western blot analysis of lysates from HT-29, MCF-7 cell line (from left to right), using CAGE1 Antibody (N-term)(Cat. #AP20879b). AP20879b was diluted at 1:1000 at each lane. A goat anti-rabbit IgG H&L(HRP) at 1:10000 dilution was used as the secondary antibody. Lysates at 20ug per lane.

Please note: All products are 'FOR RESEARCH USE ONLY. NOT FOR USE IN DIAGNOSTIC OR THERAPEUTIC PROCEDURES'.