

(Mouse) Ihh Antibody (C-term)

Purified Rabbit Polyclonal Antibody (Pab)

Catalog # AP20888c

Product Information

Application	WB, E
Primary Accession	P97812
Reactivity	Human, Rat, Mouse
Host	Rabbit
Clonality	Polyclonal
Isotype	Rabbit IgG
Clone Names	RB51202
Calculated MW	45485

Additional Information

Gene ID	16147
Other Names	Indian hedgehog protein, IHH, HHG-2, Indian hedgehog protein N-product, Indian hedgehog protein C-product, Ihh
Target/Specificity	This (Mouse) Ihh antibody is generated from a rabbit immunized with a KLH conjugated synthetic peptide between 380-410 amino acids from the C-terminal region of (Mouse) Ihh.
Dilution	WB~~1:1000 E~~Use at an assay dependent concentration.
Format	Purified polyclonal antibody supplied in PBS with 0.09% (W/V) sodium azide. This antibody is purified through a protein A column, followed by peptide affinity purification.
Storage	Maintain refrigerated at 2-8°C for up to 2 weeks. For long term storage store at -20°C in small aliquots to prevent freeze-thaw cycles.
Precautions	(Mouse) Ihh Antibody (C-term) is for research use only and not for use in diagnostic or therapeutic procedures.

Protein Information

Name	Ihh {ECO:0000312 MGI:MGI:96533}
Function	Plays a role in embryonic morphogenesis; it is involved in the regulation of endochondral skeleton formation, and the development of retinal pigment epithelium (RPE), photoreceptors and periocular tissues (PubMed: 10465785 , PubMed: 10631175 , PubMed: 18582859).

Cellular Location	[Indian hedgehog protein N-product]: Cell membrane {ECO:0000250 UniProtKB:Q14623}; Lipid-anchor {ECO:0000250 UniProtKB:Q62226}. Note=The N-product remains associated with the cell surface. {ECO:0000250 UniProtKB:Q15465}
Tissue Location	In the adult kidney, found in proximal convoluted and proximal straight tubule (PubMed:9079674). Expressed in the developing eye (PubMed:18582859).

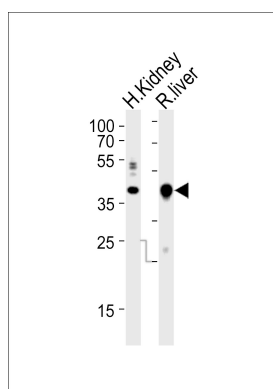
Background

Intercellular signal essential for a variety of patterning events during development. Binds to the patched (PTC) receptor, which functions in association with smoothened (SMO), to activate the transcription of target genes. Implicated in endochondral ossification: may regulate the balance between growth and ossification of the developing bones. Induces the expression of parathyroid hormone-related protein (PTHrP).

References

Valentini R.P.,et al.J. Biol. Chem. 272:8466-8473(1997).
Echelard Y.,et al.Cell 75:1417-1430(1993).
St Jacques B.,et al.Submitted (APR-1997) to the EMBL/GenBank/DDBJ databases.
Chang D.T.,et al.Development 120:3339-3353(1994).

Images



Western blot analysis of lysates from human Kidney, rat liver tissue lysate (from left to right), using Ihh Antibody (C-term)(Cat. #AP20888c). AP20888c was diluted at 1:1000 at each lane. A goat anti-rabbit IgG H&L(HRP) at 1:10000 dilution was used as the secondary antibody. Lysates at 20ug per lane.

Please note: All products are 'FOR RESEARCH USE ONLY. NOT FOR USE IN DIAGNOSTIC OR THERAPEUTIC PROCEDURES'.