

IL18R1Antibody(C-term)

Purified Rabbit Polyclonal Antibody (Pab)

Catalog # AP20911c

Product Information

Application	WB, E
Primary Accession	Q13478
Reactivity	Human
Host	Rabbit
Clonality	Polyclonal
Isotype	Rabbit IgG
Clone Names	RB44850
Calculated MW	62304

Additional Information

Gene ID	8809
Other Names	Interleukin-18 receptor 1, IL-18R-1, IL-18R1, CD218 antigen-like family member A, CDw218a, IL1 receptor-related protein, IL-1Rrp, IL1R-rp, CD218a, IL18R1, IL1RRP
Target/Specificity	This IL18R1 antibody is generated from a rabbit immunized with a KLH conjugated synthetic peptide between 527-561 amino acids from the C-terminal region of human IL18R1.
Dilution	WB~~1:1000 E~~Use at an assay dependent concentration.
Format	Purified polyclonal antibody supplied in PBS with 0.09% (W/V) sodium azide. This antibody is purified through a protein A column, followed by peptide affinity purification.
Storage	Maintain refrigerated at 2-8°C for up to 2 weeks. For long term storage store at -20°C in small aliquots to prevent freeze-thaw cycles.
Precautions	IL18R1Antibody(C-term) is for research use only and not for use in diagnostic or therapeutic procedures.

Protein Information

Name	IL18R1 (HGNC:5988)
Synonyms	IL1RRP
Function	Within the IL18 receptor complex, responsible for the binding of the pro-inflammatory cytokine IL18, but not IL1A nor IL1B (PubMed: 14528293 ,

PubMed:[25261253](#), PubMed:[25500532](#), PubMed:[37993714](#), PubMed:[8626725](#)). Involved in IL18-mediated IFNG synthesis from T-helper 1 (Th1) cells (PubMed:[10653850](#)). Contributes to IL18-induced cytokine production, either independently of SLC12A3, or as a complex with SLC12A3 (By similarity).

Cellular Location

Membrane; Single-pass type I membrane protein

Tissue Location

Highly expressed in leukocytes, spleen, lung. Also expressed, but at lower levels, in liver, small intestine, colon, prostate, thymus, placenta, and heart. Specifically coexpressed with IL18R1 in Th1 cells (PubMed:[10653850](#), PubMed:[10925275](#), PubMed:[11046021](#)).

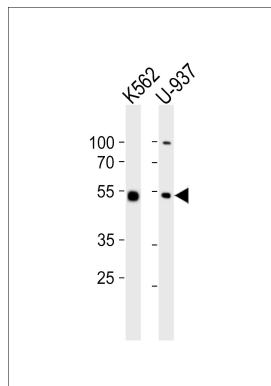
Background

Receptor for interleukin 18 (IL-18). Binding to the agonist leads to the activation of NF-kappa-B.

References

Parnet P., et al. J. Biol. Chem. 271:3967-3970(1996).
Ota T., et al. Nat. Genet. 36:40-45(2004).
Hillier L.W., et al. Nature 434:724-731(2005).
Torigoe K., et al. J. Biol. Chem. 272:25737-25742(1997).

Images



Western blot analysis of lysates from K562, U-937 cell line (from left to right), using IL18R1 Antibody (C-term)(Cat. #AP20911c). AP20911c was diluted at 1:1000 at each lane. A goat anti-rabbit IgG H&L(HRP) at 1:10000 dilution was used as the secondary antibody. Lysates at 20ug per lane.

Please note: All products are 'FOR RESEARCH USE ONLY. NOT FOR USE IN DIAGNOSTIC OR THERAPEUTIC PROCEDURES'.