

SMG7 Antibody (C-term)

Purified Rabbit Polyclonal Antibody (Pab)

Catalog # AP20918c

Product Information

Application	WB, E
Primary Accession	Q92540
Reactivity	Human, Mouse
Host	Rabbit
Clonality	Polyclonal
Isotype	Rabbit IgG
Clone Names	RB49260
Calculated MW	127282

Additional Information

Gene ID	9887
Other Names	Protein SMG7, EST1-like protein C, SMG-7 homolog, hSMG-7, SMG7, C1orf16, EST1C, KIAA0250
Target/Specificity	This SMG7 antibody is generated from a rabbit immunized with a KLH conjugated synthetic peptide between 896-930 amino acids from the C-terminal region of human SMG7.
Dilution	WB~~1:500-1:1000 E~~Use at an assay dependent concentration.
Format	Purified polyclonal antibody supplied in PBS with 0.09% (W/V) sodium azide. This antibody is purified through a protein A column, followed by peptide affinity purification.
Storage	Maintain refrigerated at 2-8°C for up to 2 weeks. For long term storage store at -20°C in small aliquots to prevent freeze-thaw cycles.
Precautions	SMG7 Antibody (C-term) is for research use only and not for use in diagnostic or therapeutic procedures.

Protein Information

Name	SMG7 (HGNC:16792)
Function	Plays a role in nonsense-mediated mRNA decay. Recruits UPF1 to cytoplasmic mRNA decay bodies. Together with SMG5 is thought to provide a link to the mRNA degradation machinery involving exonucleolytic pathways, and to serve as an adapter for UPF1 to protein phosphatase 2A (PP2A), thereby triggering UPF1 dephosphorylation.

Cellular Location

Cytoplasm. Nucleus. Note=Predominantly cytoplasmic, and nuclear. Shuttles between nucleus and cytoplasm

Background

Plays a role in nonsense-mediated mRNA decay. Recruits UPF1 to cytoplasmic mRNA decay bodies. Together with SMG5 is thought to provide a link to the mRNA degradation machinery involving exonucleolytic pathways, and to serve as an adapter for UPF1 to protein phosphatase 2A (PP2A), thereby triggering UPF1 dephosphorylation.

References

Ohnishi T.,et al.Mol. Cell 12:1187-1200(2003).

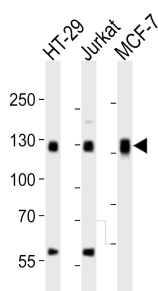
Nagase T.,et al.DNA Res. 3:321-329(1996).

Nakajima D.,et al.DNA Res. 9:99-106(2002).

Ota T.,et al.Nat. Genet. 36:40-45(2004).

Gregory S.G.,et al.Nature 441:315-321(2006).

Images



Western blot analysis of lysates from HT-29, Jurkat, MCF-7 cell line (from left to right), using SMG7 Antibody (C-term)(Cat. #AP20918c). AP20918c was diluted at 1:1000 at each lane. A goat anti-rabbit IgG H&L(HRP) at 1:10000 dilution was used as the secondary antibody. Lysates at 20ug per lane.

Please note: All products are 'FOR RESEARCH USE ONLY. NOT FOR USE IN DIAGNOSTIC OR THERAPEUTIC PROCEDURES'.