

Mouse Epha6 Antibody (C-term)

Purified Rabbit Polyclonal Antibody (Pab)

Catalog # AP20923c

Product Information

Application	WB, E
Primary Accession	Q62413
Reactivity	Human, Rat, Mouse
Host	Rabbit
Clonality	Polyclonal
Isotype	Rabbit IgG
Clone Names	RB50475
Calculated MW	116185

Additional Information

Other Names	Ephrin type-A receptor 6, EPH homology kinase 2, EHK-2, Epha6, Ehk-2, Ehk2
Target/Specificity	This Mouse Epha6 antibody is generated from a rabbit immunized with a KLH conjugated synthetic peptide between 930-961 amino acids from the C-terminal region of Mouse Epha6.
Dilution	WB~~1:1000 E~~Use at an assay dependent concentration.
Format	Purified polyclonal antibody supplied in PBS with 0.09% (W/V) sodium azide. This antibody is purified through a protein A column, followed by peptide affinity purification.
Storage	Maintain refrigerated at 2-8°C for up to 2 weeks. For long term storage store at -20°C in small aliquots to prevent freeze-thaw cycles.
Precautions	Mouse Epha6 Antibody (C-term) is for research use only and not for use in diagnostic or therapeutic procedures.

Protein Information

Name	Epha6
Synonyms	Ehk-2, Ehk2
Function	Receptor tyrosine kinase which binds promiscuously GPI- anchored ephrin-A family ligands residing on adjacent cells, leading to contact-dependent bidirectional signaling into neighboring cells. The signaling pathway downstream of the receptor is referred to as forward signaling while the signaling pathway downstream of the ephrin ligand is referred to as reverse signaling (By similarity).

Cellular Location

Membrane; Single-pass type I membrane protein.

Background

Receptor tyrosine kinase which binds promiscuously GPI- anchored ephrin-A family ligands residing on adjacent cells, leading to contact-dependent bidirectional signaling into neighboring cells. The signaling pathway downstream of the receptor is referred to as forward signaling while the signaling pathway downstream of the ephrin ligand is referred to as reverse signaling (By similarity).

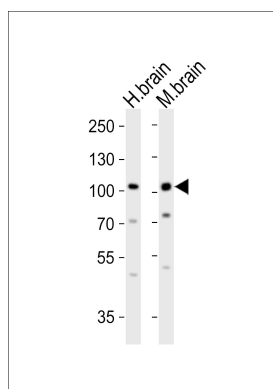
References

Lee A.M.,et al.DNA Cell Biol. 15:817-825(1996).

Mural R.J.,et al.Submitted (JUL-2005) to the EMBL/GenBank/DDBJ databases.

Carninci P.,et al.Science 309:1559-1563(2005).

Images



Western blot analysis of lysates from human brain and mouse brain tissue (from left to right), using EphA6 Antibody (C-term)(Cat. #AP20923c). AP20923c was diluted at 1:1000 at each lane. A goat anti-rabbit IgG H&L(HRP) at 1:10000 dilution was used as the secondary antibody. Lysates at 20ug per lane.

Please note: All products are 'FOR RESEARCH USE ONLY. NOT FOR USE IN DIAGNOSTIC OR THERAPEUTIC PROCEDURES'.