

CD34 Antibody (C-term)

Purified Rabbit Polyclonal Antibody (Pab)

Catalog # AP20932c

Product Information

Application	WB, IF, E
Primary Accession	P28906
Reactivity	Human, Mouse
Host	Rabbit
Clonality	Polyclonal
Isotype	Rabbit IgG
Clone Names	RB51647
Calculated MW	40716

Additional Information

Gene ID	947
Other Names	Hematopoietic progenitor cell antigen CD34, CD34, CD34
Target/Specificity	This CD34 antibody is generated from a rabbit immunized with a KLH conjugated synthetic peptide between 320-354 amino acids from the C-terminal region of human CD34.
Dilution	WB~~1:1000 IF~~1:25 E~~Use at an assay dependent concentration.
Format	Purified polyclonal antibody supplied in PBS with 0.09% (W/V) sodium azide. This antibody is purified through a protein A column, followed by peptide affinity purification.
Storage	Maintain refrigerated at 2-8°C for up to 2 weeks. For long term storage store at -20°C in small aliquots to prevent freeze-thaw cycles.
Precautions	CD34 Antibody (C-term) is for research use only and not for use in diagnostic or therapeutic procedures.

Protein Information

Name	CD34
Function	Possible adhesion molecule with a role in early hematopoiesis by mediating the attachment of stem cells to the bone marrow extracellular matrix or directly to stromal cells. Could act as a scaffold for the attachment of lineage specific glycans, allowing stem cells to bind to lectins expressed by stromal cells or other marrow components. Presents carbohydrate ligands to selectins.

Cellular Location

Membrane; Single-pass type I membrane protein.

Tissue Location

Selectively expressed on hematopoietic progenitor cells and the small vessel endothelium of a variety of tissues

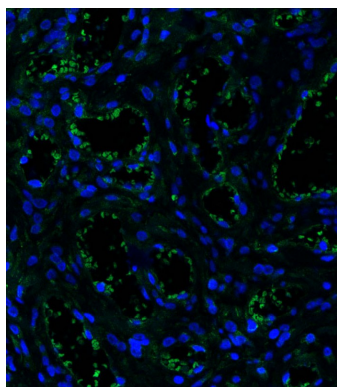
Background

Possible adhesion molecule with a role in early hematopoiesis by mediating the attachment of stem cells to the bone marrow extracellular matrix or directly to stromal cells. Could act as a scaffold for the attachment of lineage specific glycans, allowing stem cells to bind to lectins expressed by stromal cells or other marrow components. Presents carbohydrate ligands to selectins.

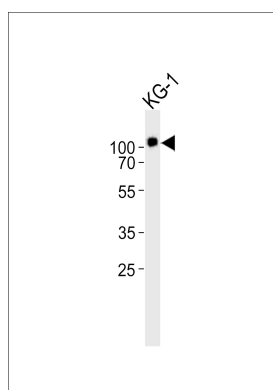
References

Simmons D.L.,et al.J. Immunol. 148:267-271(1992).
Satterthwaite A.B.,et al.Genomics 12:788-794(1992).
Nakamura Y.,et al.Exp. Hematol. 21:236-242(1993).
Freund D.,et al.Submitted (JUN-2002) to the EMBL/GenBank/DBJ databases.
Ota T.,et al.Nat. Genet. 36:40-45(2004).

Images



Immunofluorescent analysis of 4% paraformaldehyde-fixed, 0.1% Triton X-100 permeabilized human haemangioma tissue labeling CD34 with AP20932c at 1/25 dilution, followed by Alexa Fluor 488-conjugated goat anti-rabbit IgG (1583138) secondary antibody at 1/400 dilution (green). Confocal image showing membrane staining on human haemangioma tissue. The nuclear counter stain is DAPI (blue).



Western blot analysis of lysate from KG-1 cell line, using CD34 Antibody (C-term)(Cat. #AP20932c). AP20932c was diluted at 1:1000. A goat anti-rabbit IgG H&L(HRP) at 1:10000 dilution was used as the secondary antibody. Lysate at 20ug.

Please note: All products are 'FOR RESEARCH USE ONLY. NOT FOR USE IN DIAGNOSTIC OR THERAPEUTIC PROCEDURES'.