

# POU5F1B Antibody (C-term)

Purified Rabbit Polyclonal Antibody (Pab)

Catalog # AP20933c

## Product Information

---

Application	WB, E
Primary Accession	<a href="#">Q06416</a>
Reactivity	Human
Host	Rabbit
Clonality	Polyclonal
Isotype	Rabbit IgG
Clone Names	RB51289
Calculated MW	38588

## Additional Information

---

Gene ID	5462
Other Names	Putative POU domain, class 5, transcription factor 1B, Oct4-pg1, Octamer-binding protein 3-like, Octamer-binding transcription factor 3-like, POU5F1B
Target/Specificity	This POU5F1B antibody is generated from a rabbit immunized with a KLH conjugated synthetic peptide between 292-326 amino acids from the C-terminal region of human POU5F1B.
Dilution	WB~~1:1000 E~~Use at an assay dependent concentration.
Format	Purified polyclonal antibody supplied in PBS with 0.09% (W/V) sodium azide. This antibody is purified through a protein A column, followed by peptide affinity purification.
Storage	Maintain refrigerated at 2-8°C for up to 2 weeks. For long term storage store at -20°C in small aliquots to prevent freeze-thaw cycles.
Precautions	POU5F1B Antibody (C-term) is for research use only and not for use in diagnostic or therapeutic procedures.

## Protein Information

---

Name	POU5F1B
Function	Shows weak transcriptional activator activity.
Cellular Location	Nucleus {ECO:0000255   PROSITE-ProRule:PRU00108, ECO:0000255   PROSITE-ProRule:PRU00530, ECO:0000269   PubMed:18949397}

Cytoplasm

## Tissue Location

Detected in epithelial cells of the prostate (at protein level) (PubMed:20017164). Detected at the mRNA level in several cancer tissues (breast, uterine cervix, lung, thyroid gland, esophagus, colon, urinary bladder, and glioma) (PubMed:16229821, PubMed:21341266)

## Background

---

Shows weak transcriptional activator activity.

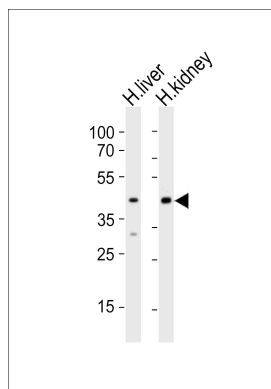
## References

---

Takeda J., et al. Nucleic Acids Res. 20:4613-4620(1992).  
Marques A.C., et al. PLoS Biol. 3:E357-E357(2005).  
van Roozendaal K.E.P., et al. Submitted (MAY-2000) to the EMBL/GenBank/DDBJ databases.  
Zhao F.-Q., et al. Submitted (APR-2006) to the EMBL/GenBank/DDBJ databases.  
Zhao S., et al. Submitted (AUG-2010) to the EMBL/GenBank/DDBJ databases.

## Images

---



Western blot analysis of lysates from human liver, human kidney tissue (from left to right), using POU5F1B Antibody (C-term)(Cat. #AP20933c). AP20933c was diluted at 1:1000 at each lane. A goat anti-rabbit IgG H&L(HRP) at 1:10000 dilution was used as the secondary antibody. Lysates at 20ug per lane.

Please note: All products are 'FOR RESEARCH USE ONLY. NOT FOR USE IN DIAGNOSTIC OR THERAPEUTIC PROCEDURES'.