

# PPP2R1B Antibody (N-term)

Purified Rabbit Polyclonal Antibody (Pab)

Catalog # AP20941b

## Product Information

---

Application	WB, E
Primary Accession	<a href="#">P30154</a>
Reactivity	Human
Host	Rabbit
Clonality	Polyclonal
Isotype	Rabbit IgG
Clone Names	RB51483
Calculated MW	66214

## Additional Information

---

Gene ID	5519
Other Names	Serine/threonine-protein phosphatase 2A 65 kDa regulatory subunit A beta isoform, PP2A subunit A isoform PR65-beta, PP2A subunit A isoform R1-beta, PPP2R1B
Target/Specificity	This PPP2R1B antibody is generated from a rabbit immunized with a KLH conjugated synthetic peptide between 5~37 amino acids from the N-terminal region of human PPP2R1B.
Dilution	WB~~1:1000 E~~Use at an assay dependent concentration.
Format	Purified polyclonal antibody supplied in PBS with 0.09% (W/V) sodium azide. This antibody is purified through a protein A column, followed by peptide affinity purification.
Storage	Maintain refrigerated at 2-8°C for up to 2 weeks. For long term storage store at -20°C in small aliquots to prevent freeze-thaw cycles.
Precautions	PPP2R1B Antibody (N-term) is for research use only and not for use in diagnostic or therapeutic procedures.

## Protein Information

---

Name	PPP2R1B
Function	The PR65 subunit of protein phosphatase 2A serves as a scaffolding molecule to coordinate the assembly of the catalytic subunit and a variable regulatory B subunit.

## Background

---

The PR65 subunit of protein phosphatase 2A serves as a scaffolding molecule to coordinate the assembly of the catalytic subunit and a variable regulatory B subunit.

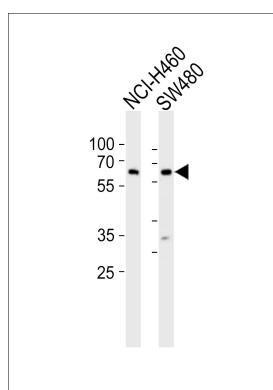
## References

---

Baysal B.E.,et al.Gene 217:107-116(1998).  
Wang S.S.,et al.Science 282:284-287(1998).  
Baysal B.E.,et al.Eur. J. Hum. Genet. 9:121-129(2001).  
Ota T.,et al.Nat. Genet. 36:40-45(2004).  
Taylor T.D.,et al.Nature 440:497-500(2006).

## Images

---



Western blot analysis of lysates from NCI-H460, SW480 cell line (from left to right), using PPP2R1B Antibody (N-term)(Cat. #AP20941b). AP20941b was diluted at 1:1000 at each lane. A goat anti-rabbit IgG H&L(HRP) at 1:10000 dilution was used as the secondary antibody. Lysates at 20ug per lane.

Please note: All products are 'FOR RESEARCH USE ONLY. NOT FOR USE IN DIAGNOSTIC OR THERAPEUTIC PROCEDURES'.