

# PCGF6 Antibody (C-term)

Purified Rabbit Polyclonal Antibody (Pab)

Catalog # AP20945c

## Product Information

---

<b>Application</b>	WB, IF, E
<b>Primary Accession</b>	<a href="#">Q9BYE7</a>
<b>Reactivity</b>	Human, Rat, Mouse
<b>Host</b>	Rabbit
<b>Clonality</b>	Polyclonal
<b>Isotype</b>	Rabbit IgG
<b>Clone Names</b>	RB51296
<b>Calculated MW</b>	39047

## Additional Information

---

<b>Gene ID</b>	84108
<b>Other Names</b>	Polycomb group RING finger protein 6, Mel18 and Bmi1-like RING finger, RING finger protein 134, PCGF6, MBLR, RNF134
<b>Target/Specificity</b>	This PCGF6 antibody is generated from a rabbit immunized with a KLH conjugated synthetic peptide between 261-295 amino acids from the C-terminal region of human PCGF6.
<b>Dilution</b>	WB~~1:1000 IF~~1:25 E~~Use at an assay dependent concentration.
<b>Format</b>	Purified polyclonal antibody supplied in PBS with 0.09% (W/V) sodium azide. This antibody is purified through a protein A column, followed by peptide affinity purification.
<b>Storage</b>	Maintain refrigerated at 2-8°C for up to 2 weeks. For long term storage store at -20°C in small aliquots to prevent freeze-thaw cycles.
<b>Precautions</b>	PCGF6 Antibody (C-term) is for research use only and not for use in diagnostic or therapeutic procedures.

## Protein Information

---

<b>Name</b>	PCGF6
<b>Synonyms</b>	MBLR, RNF134
<b>Function</b>	Transcriptional repressor (PubMed: <a href="#">12167161</a> ). May modulate the levels of histone H3K4Me3 by activating KDM5D histone demethylase (PubMed: <a href="#">17320162</a> ). Component of a Polycomb group (PcG) multiprotein

PRC1-like complex, a complex class required to maintain the transcriptionally repressive state of many genes, including Hox genes, throughout development. PcG PRC1 complex acts via chromatin remodeling and modification of histones; it mediates monoubiquitination of histone H2A 'Lys-119', rendering chromatin heritably changed in its expressibility (PubMed:[12167161](#)). Within the PRC1-like complex, regulates RNF2 ubiquitin ligase activity (PubMed:[26151332](#)).

<b>Cellular Location</b>	Nucleus
<b>Tissue Location</b>	Ubiquitous.

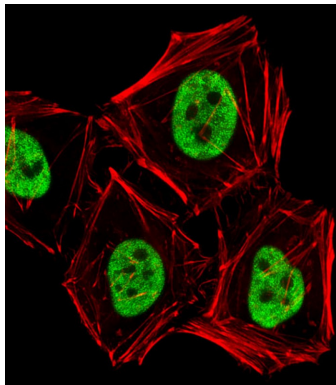
## Background

Transcriptional repressor. May modulate the levels of histone H3K4Me3 by activating KDM5D histone demethylase. Component of a Polycomb group (PcG) multiprotein PRC1-like complex, a complex class required to maintain the transcriptionally repressive state of many genes, including Hox genes, throughout development. PcG PRC1 complex acts via chromatin remodeling and modification of histones; it mediates monoubiquitination of histone H2A 'Lys-119', rendering chromatin heritably changed in its expressibility.

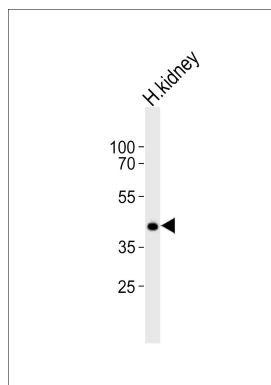
## References

Akasaka T.,et al.Genes Cells 7:835-850(2002).  
Ota T.,et al.Nat. Genet. 36:40-45(2004).  
Deloukas P.,et al.Nature 429:375-381(2004).  
Lee M.G.,et al.Cell 128:877-887(2007).  
Maertens G.N.,et al.PLoS ONE 4:E6380-E6380(2009).

## Images



Fluorescent image of HeLa cells stained with PCGF6 Antibody (C-term)(Cat#AP20945c). AP20945c was diluted at 1:25 dilution. An Alexa Fluor 488-conjugated goat anti-rabbit IgG at 1:400 dilution was used as the secondary antibody (green). Cytoplasmic actin was counterstained with Alexa Fluor® 555 conjugated with Phalloidin (red).



Western blot analysis of lysate from human kidney tissue, using PCGF6 Antibody (C-term)(Cat. #AP20945c). AP20945c was diluted at 1:1000. A goat anti-rabbit IgG H&L(HRP) at 1:10000 dilution was used as the secondary antibody. Lysate at 20ug.

Please note: All products are 'FOR RESEARCH USE ONLY. NOT FOR USE IN DIAGNOSTIC OR THERAPEUTIC PROCEDURES'.