

# COX11 Antibody (C-term)

Purified Rabbit Polyclonal Antibody (Pab)

Catalog # AP20946c

## Product Information

---

Application	WB, E
Primary Accession	<a href="#">Q9Y6N1</a>
Reactivity	Human, Mouse
Host	Rabbit
Clonality	Polyclonal
Isotype	Rabbit IgG
Clone Names	RB43555
Calculated MW	31430

## Additional Information

---

Gene ID	1353
Other Names	Cytochrome c oxidase assembly protein COX11, mitochondrial, COX11
Target/Specificity	This COX11 antibody is generated from a rabbit immunized with a KLH conjugated synthetic peptide between 262-296 amino acids from the C-terminal region of human COX11.
Dilution	WB~~1:1000 E~~Use at an assay dependent concentration.
Format	Purified polyclonal antibody supplied in PBS with 0.09% (W/V) sodium azide. This antibody is purified through a protein A column, followed by peptide affinity purification.
Storage	Maintain refrigerated at 2-8°C for up to 2 weeks. For long term storage store at -20°C in small aliquots to prevent freeze-thaw cycles.
Precautions	COX11 Antibody (C-term) is for research use only and not for use in diagnostic or therapeutic procedures.

## Protein Information

---

Name	COX11
Function	Exerts its effect at some terminal stage of cytochrome c oxidase synthesis, probably by being involved in the insertion of the copper B into subunit I.
Cellular Location	Mitochondrion inner membrane; Single-pass membrane protein; Intermembrane side

**Tissue Location**

Ubiquitous..

**Background**

---

Exerts its effect at some terminal stage of cytochrome c oxidase synthesis, probably by being involved in the insertion of the copper B into subunit I (By similarity).

**References**

---

Petruzzella V.,et al.Genomics 54:494-504(1998).

Ebert L.,et al.Submitted (JUN-2004) to the EMBL/GenBank/DDBJ databases.

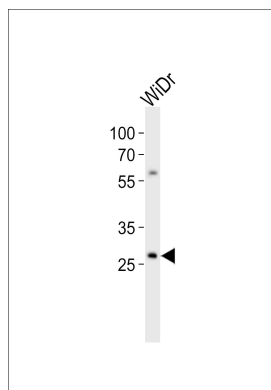
Zody M.C.,et al.Nature 440:1045-1049(2006).

Mural R.J.,et al.Submitted (SEP-2005) to the EMBL/GenBank/DDBJ databases.

Yu W.,et al.Genome Res. 7:353-358(1997).

**Images**

---



Western blot analysis of lysate from WiDr cell line, using COX11 Antibody (C-term)(Cat. #AP20946c). AP20946c was diluted at 1:1000. A goat anti-rabbit IgG H&L(HRP) at 1:10000 dilution was used as the secondary antibody. Lysate at 20ug.

Please note: All products are 'FOR RESEARCH USE ONLY. NOT FOR USE IN DIAGNOSTIC OR THERAPEUTIC PROCEDURES'.