

GNL3 Antibody (N-term)

Purified Rabbit Polyclonal Antibody (Pab)

Catalog # AP20949b

Product Information

Application	WB, IF, E
Primary Accession	Q9BVP2
Reactivity	Human, Rat, Mouse
Host	Rabbit
Clonality	Polyclonal
Isotype	Rabbit IgG
Clone Names	RB51602
Calculated MW	61993

Additional Information

Gene ID	26354
Other Names	Guanine nucleotide-binding protein-like 3, E2-induced gene 3 protein, Novel nucleolar protein 47, NNP47, Nucleolar GTP-binding protein 3, Nucleostemin, GNL3, E2IG3, NS
Target/Specificity	This GNL3 antibody is generated from a rabbit immunized with a KLH conjugated synthetic peptide between 38-72 amino acids from the N-terminal region of human GNL3.
Dilution	WB~~1:1000 IF~~1:25 E~~Use at an assay dependent concentration.
Format	Purified polyclonal antibody supplied in PBS with 0.09% (W/V) sodium azide. This antibody is purified through a protein A column, followed by peptide affinity purification.
Storage	Maintain refrigerated at 2-8°C for up to 2 weeks. For long term storage store at -20°C in small aliquots to prevent freeze-thaw cycles.
Precautions	GNL3 Antibody (N-term) is for research use only and not for use in diagnostic or therapeutic procedures.

Protein Information

Name	GNL3
Synonyms	E2IG3, NS
Function	May be required to maintain the proliferative capacity of stem cells. Stabilizes MDM2 by preventing its ubiquitination, and hence proteasomal

degradation (By similarity).

Cellular Location

Nucleus {ECO:0000250|UniProtKB:Q811S9}. Nucleus, nucleolus.
Note=Shuttles between the nucleus and nucleolus.
{ECO:0000250|UniProtKB:Q811S9}

Tissue Location

Increased levels in lung tissue in cancer patients.

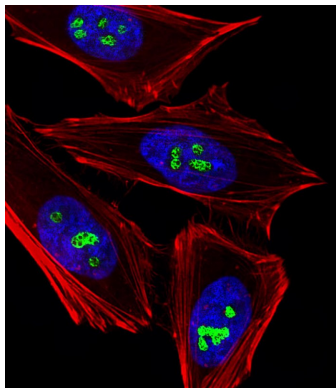
Background

May be required to maintain the proliferative capacity of stem cells. Stabilizes MDM2 by preventing its ubiquitination, and hence proteasomal degradation (By similarity).

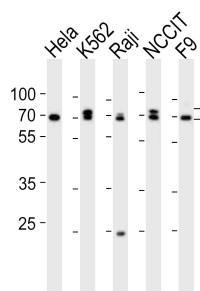
References

Charpentier A.H.,et al.Cancer Res. 60:5977-5983(2000).
Han C.,et al.Int. J. Mol. Med. 16:205-213(2005).
Ota T.,et al.Nat. Genet. 36:40-45(2004).
Muzny D.M.,et al.Nature 440:1194-1198(2006).
Andersen J.S.,et al.Curr. Biol. 12:1-11(2002).

Images



Fluorescent image of HeLa cells stained with GNL3 Antibody (N-term)(Cat#AP20949b). AP20949b was diluted at 1:25 dilution. An Alexa Fluor 488-conjugated goat anti-rabbit IgG at 1:400 dilution was used as the secondary antibody (green). Cytoplasmic actin was counterstained with Alexa Fluor® 555 conjugated with Phalloidin (red). DAPI was used to stain the cell nuclear (blue).



Western blot analysis of lysates from HeLa, K562, Raji, NCCIT, F9 cell line (from left to right), using GNL3 Antibody (N-term)(Cat. #AP20949b). AP20949b was diluted at 1:1000 at each lane. A goat anti-rabbit IgG H&L(HRP) at 1:10000 dilution was used as the secondary antibody. Lysates at 20ug per lane.

Please note: All products are 'FOR RESEARCH USE ONLY. NOT FOR USE IN DIAGNOSTIC OR THERAPEUTIC PROCEDURES'.