

(DANRE) ba1 Antibody (N-term)

Purified Rabbit Polyclonal Antibody (Pab)

Catalog # AP20954b

Product Information

Application	WB, E
Primary Accession	Q90486
Reactivity	Zebrafish
Host	Rabbit
Clonality	Polyclonal
Isotype	Rabbit IgG
Clone Names	RB46526
Calculated MW	16389

Additional Information

Gene ID	30216;504174
Other Names	Hemoglobin subunit beta-1, Beta-1-globin, Beta-A1-globin, Hemoglobin beta-1 chain, ba1
Target/Specificity	This (DANRE) ba1 antibody is generated from a rabbit immunized with a KLH conjugated synthetic peptide between 2-35 amino acids from the N-terminal region of DANRE ba1.
Dilution	WB~~1:1000 E~~Use at an assay dependent concentration.
Format	Purified polyclonal antibody supplied in PBS with 0.09% (W/V) sodium azide. This antibody is purified through a protein A column, followed by peptide affinity purification.
Storage	Maintain refrigerated at 2-8°C for up to 2 weeks. For long term storage store at -20°C in small aliquots to prevent freeze-thaw cycles.
Precautions	(DANRE) ba1 Antibody (N-term) is for research use only and not for use in diagnostic or therapeutic procedures.

Protein Information

Name	ba1
Function	Involved in oxygen transport from gills to the various peripheral tissues.
Tissue Location	Red blood cells..

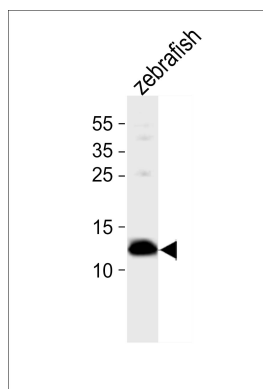
Background

Involved in oxygen transport from gills to the various peripheral tissues.

References

Chan F.-Y.,et al.Blood 89:688-700(1997).
Howe K.,et al.Nature 496:498-503(2013).

Images



Western blot analysis of lysate from zebrafish tissue, using (DANRE) ba1 Antibody (N-term)(Cat. #AP20954b). AP20954b was diluted at 1:1000. A goat anti-rabbit IgG H&L(HRP) at 1:10000 dilution was used as the secondary antibody. Lysate at 5ug.

Please note: All products are 'FOR RESEARCH USE ONLY. NOT FOR USE IN DIAGNOSTIC OR THERAPEUTIC PROCEDURES'.