

PPP2R2C Antibody (N-term)

Purified Rabbit Polyclonal Antibody (Pab)

Catalog # AP20956b

Product Information

Application	WB, E
Primary Accession	Q9Y2T4
Reactivity	Human, Rat, Mouse
Host	Rabbit
Clonality	Polyclonal
Isotype	Rabbit IgG
Clone Names	RB51485
Calculated MW	51515

Additional Information

Gene ID	5522
Other Names	Serine/threonine-protein phosphatase 2A 55 kDa regulatory subunit B gamma isoform, IMYPNO1, PP2A subunit B isoform B55-gamma, PP2A subunit B isoform PR55-gamma, PP2A subunit B isoform R2-gamma, PP2A subunit B isoform gamma, PPP2R2C
Target/Specificity	This PPP2R2C antibody is generated from a rabbit immunized with a KLH conjugated synthetic peptide between 53-86 amino acids from the N-terminal region of human PPP2R2C.
Dilution	WB~~1:1000 E~~Use at an assay dependent concentration.
Format	Purified polyclonal antibody supplied in PBS with 0.09% (W/V) sodium azide. This antibody is purified through a protein A column, followed by peptide affinity purification.
Storage	Maintain refrigerated at 2-8°C for up to 2 weeks. For long term storage store at -20°C in small aliquots to prevent freeze-thaw cycles.
Precautions	PPP2R2C Antibody (N-term) is for research use only and not for use in diagnostic or therapeutic procedures.

Protein Information

Name	PPP2R2C
Function	The B regulatory subunit might modulate substrate selectivity and catalytic activity, and might also direct the localization of the catalytic enzyme to a particular subcellular compartment.

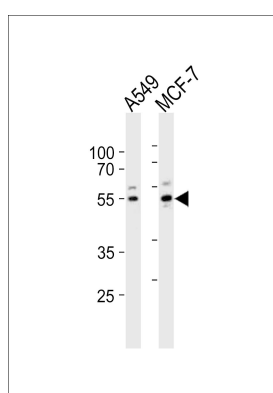
Background

The B regulatory subunit might modulate substrate selectivity and catalytic activity, and also might direct the localization of the catalytic enzyme to a particular subcellular compartment.

References

Torres R.,et al.DNA Res. 6:323-327(1999).
Hu P.,et al.Genomics 67:83-86(2000).
Yu L.,et al.Submitted (APR-1999) to the EMBL/GenBank/DDBJ databases.
Ota T.,et al.Nat. Genet. 36:40-45(2004).
Hillier L.W.,et al.Nature 434:724-731(2005).

Images



Western blot analysis of lysates from A549, MCF-7 cell line (from left to right), using PPP2R2C Antibody (N-term)(Cat. #AP20956b). AP20956b was diluted at 1:1000 at each lane. A goat anti-rabbit IgG H&L(HRP) at 1:10000 dilution was used as the secondary antibody. Lysates at 20ug per lane.

Please note: All products are 'FOR RESEARCH USE ONLY. NOT FOR USE IN DIAGNOSTIC OR THERAPEUTIC PROCEDURES'.