

# DLK1 Antibody (C-term)

Purified Rabbit Polyclonal Antibody (Pab)

Catalog # AP20959c

## Product Information

---

<b>Application</b>	WB, IHC-P, FC, E
<b>Primary Accession</b>	<a href="#">P80370</a>
<b>Reactivity</b>	Human, Mouse
<b>Host</b>	Rabbit
<b>Clonality</b>	Polyclonal
<b>Isotype</b>	Rabbit IgG
<b>Clone Names</b>	RB51648
<b>Calculated MW</b>	41300

## Additional Information

---

<b>Gene ID</b>	8788
<b>Other Names</b>	Protein delta homolog 1, DLK-1, pG2, Fetal antigen 1, FA1, DLK1, DLK
<b>Target/Specificity</b>	This DLK1 antibody is generated from a rabbit immunized with a KLH conjugated synthetic peptide between 368-402 amino acids from the C-terminal region of human DLK1.
<b>Dilution</b>	WB~~1:1000 IHC-P~~1:100~500 FC~~1:25 E~~Use at an assay dependent concentration.
<b>Format</b>	Purified polyclonal antibody supplied in PBS with 0.05% (V/V) Proclin 300. This antibody is purified through a protein A column, followed by peptide affinity purification.
<b>Storage</b>	Maintain refrigerated at 2-8°C for up to 2 weeks. For long term storage store at -20°C in small aliquots to prevent freeze-thaw cycles.
<b>Precautions</b>	DLK1 Antibody (C-term) is for research use only and not for use in diagnostic or therapeutic procedures.

## Protein Information

---

<b>Name</b>	DLK1
<b>Synonyms</b>	DLK
<b>Function</b>	May have a role in neuroendocrine differentiation.
<b>Cellular Location</b>	Membrane; Single-pass type I membrane protein. Cytoplasm

## Tissue Location

Found within the stromal cells in close contact to the vascular structure of placental villi, yolk sac, fetal liver, adrenal cortex and pancreas and in the beta cells of the islets of Langerhans in the adult pancreas. Found also in some forms of neuroendocrine lung tumor tissue

## Background

---

May have a role in neuroendocrine differentiation.

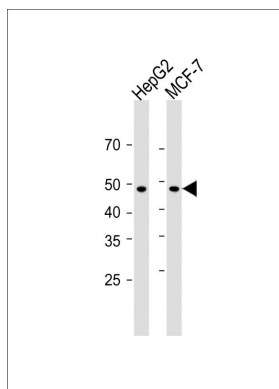
## References

---

Laborda J.,et al.J. Biol. Chem. 268:3817-3820(1993).  
Lee Y.L.,et al.Biochim. Biophys. Acta 1261:223-232(1995).  
Helman L.J.,et al.Nucleic Acids Res. 18:685-685(1990).  
Heilig R.,et al.Nature 421:601-607(2003).  
Jensen C.H.,et al.Eur. J. Biochem. 225:83-92(1994).

## Images

---



All lanes: Anti-DLK1 Antibody (C-term) at 1:500 dilution  
Lane 1: HepG2 whole cell lysate Lane 2: MCF-7 whole cell lysate  
Lysates/proteins at 20 µg per lane. Secondary: Goat Anti-Rabbit IgG, (H+L), Peroxidase conjugated (ASP1615) at 1/15000 dilution. Observed band size: 45 KDa  
Blocking/Dilution buffer: 5% NFDM/TBST.

## Citations

---

- [Endoglin Is Essential for the Maintenance of Self-Renewal and Chemoresistance in Renal Cancer Stem Cells.](#)

Please note: All products are 'FOR RESEARCH USE ONLY. NOT FOR USE IN DIAGNOSTIC OR THERAPEUTIC PROCEDURES'.