

SDAD1 Antibody (C-term)

Purified Rabbit Polyclonal Antibody (Pab)

Catalog # AP20962c

Product Information

Application	WB, E
Primary Accession	Q9NVU7
Reactivity	Human, Rat, Mouse
Host	Rabbit
Clonality	Polyclonal
Isotype	Rabbit IgG
Clone Names	RB51517
Calculated MW	79871

Additional Information

Gene ID	55153
Other Names	Protein SDA1 homolog, Nucleolar protein 130, SDA1 domain-containing protein 1, hSDA, SDAD1, NUC130
Target/Specificity	This SDAD1 antibody is generated from a rabbit immunized with a KLH conjugated synthetic peptide between 596-629 amino acids from the C-terminal region of human SDAD1.
Dilution	WB~~1:1000 E~~Use at an assay dependent concentration.
Format	Purified polyclonal antibody supplied in PBS with 0.09% (W/V) sodium azide. This antibody is purified through a protein A column, followed by peptide affinity purification.
Storage	Maintain refrigerated at 2-8°C for up to 2 weeks. For long term storage store at -20°C in small aliquots to prevent freeze-thaw cycles.
Precautions	SDAD1 Antibody (C-term) is for research use only and not for use in diagnostic or therapeutic procedures.

Protein Information

Name	SDAD1
Synonyms	NUC130
Function	Required for 60S pre-ribosomal subunits export to the cytoplasm.
Cellular Location	Nucleus, nucleolus

Tissue Location

Highly expressed in testis, kidney, spleen, brain and fetal tissues. Also expressed at lower level in heart, lung, liver, small intestine, ovary, uterus, mammary gland and placenta

Background

Required for 60S pre-ribosomal subunits export to the cytoplasm (By similarity).

References

Bechtel S.,et al.BMC Genomics 8:399-399(2007).

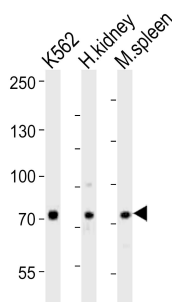
Hillier L.W.,et al.Nature 434:724-731(2005).

Ota T.,et al.Nat. Genet. 36:40-45(2004).

Andersen J.S.,et al.Curr. Biol. 12:1-11(2002).

Babbio F.,et al.Cell Cycle 3:486-490(2004).

Images



Western blot analysis of lysates from K562 cell line, human kidney, mouse spleen tissue (from left to right), using SDAD1 Antibody (C-term)(Cat. #AP20962c). AP20962c was diluted at 1:1000 at each lane. A goat anti-rabbit IgG H&L(HRP) at 1:10000 dilution was used as the secondary antibody. Lysates at 20ug per lane.

Please note: All products are 'FOR RESEARCH USE ONLY. NOT FOR USE IN DIAGNOSTIC OR THERAPEUTIC PROCEDURES'.