

## (Mouse) Msi1 Antibody (Center)

Purified Rabbit Polyclonal Antibody (Pab)

Catalog # AP20967a

### Product Information

---

<b>Application</b>	WB, E
<b>Primary Accession</b>	<a href="#">Q61474</a>
<b>Reactivity</b>	Human, Rat, Mouse
<b>Host</b>	Rabbit
<b>Clonality</b>	Polyclonal
<b>Isotype</b>	Rabbit IgG
<b>Clone Names</b>	RB51509
<b>Calculated MW</b>	39119

### Additional Information

---

<b>Gene ID</b>	17690
<b>Other Names</b>	RNA-binding protein Musashi homolog 1, Musashi-1, Msi1, Msi1h
<b>Target/Specificity</b>	This mouse Msi1 antibody is generated from a rabbit immunized with a KLH conjugated synthetic peptide between 81-113 amino acids from the Central region of mouse Msi1.
<b>Dilution</b>	WB~~1:1000 E~~Use at an assay dependent concentration.
<b>Format</b>	Purified polyclonal antibody supplied in PBS with 0.09% (W/V) sodium azide. This antibody is purified through a protein A column, followed by peptide affinity purification.
<b>Storage</b>	Maintain refrigerated at 2-8°C for up to 2 weeks. For long term storage store at -20°C in small aliquots to prevent freeze-thaw cycles.
<b>Precautions</b>	(Mouse) Msi1 Antibody (Center) is for research use only and not for use in diagnostic or therapeutic procedures.

### Protein Information

---

<b>Name</b>	Msi1
<b>Synonyms</b>	Msi1h
<b>Function</b>	RNA binding protein that regulates the expression of target mRNAs at the translation level. Regulates expression of the NOTCH1 antagonist NUMB. Binds RNA containing the sequence 5'-GUUAGUUAGUUAGUU- 3' and other sequences containing the pattern 5'-[GA]U(1-3)AGU-3'. May play a role in the

proliferation and maintenance of stem cells in the central nervous system.

**Cellular Location**

Cytoplasm. Nucleus

**Tissue Location**

Expressed in neural stem and progenitor cells (at protein level) (PubMed:16554442). Detected in olfactory bulb, brain stem, small intestine, and at low levels in brain cortex, hippocampus and ovary (PubMed:8660864). Detected in neural progenitor cells, including neural stem cells (PubMed:8660864)

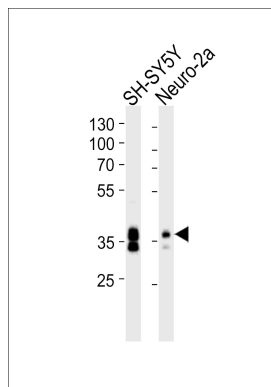
## Background

RNA binding protein that regulates the expression of target mRNAs at the translation level. Regulates expression of the NOTCH1 antagonist NUMB. Binds RNA containing the sequence 5'-GUUAGUUAGUUAGUU-3' and other sequences containing the pattern 5'-[GA]U(1-3)AGU-3'. May play a role in the proliferation and maintenance of stem cells in the central nervous system.

## References

Sakakibara S.,et al.Dev. Biol. 176:230-242(1996).  
Carninci P.,et al.Science 309:1559-1563(2005).  
Imai T.,et al.Mol. Cell. Biol. 21:3888-3900(2001).  
Sakakibara S.,et al.Proc. Natl. Acad. Sci. U.S.A. 99:15194-15199(2002).  
Nagata T.,et al.J. Mol. Biol. 287:315-330(1999).

## Images



Western blot analysis of lysates from SH-SY5Y, Neuro-2a cell line (from left to right), using (Mouse) Msi1 Antibody (Center)(Cat. #AP20967a). AP20967a was diluted at 1:1000 at each lane. A goat anti-rabbit IgG H&L(HRP) at 1:10000 dilution was used as the secondary antibody. Lysates at 20ug per lane.

Please note: All products are 'FOR RESEARCH USE ONLY. NOT FOR USE IN DIAGNOSTIC OR THERAPEUTIC PROCEDURES'.