

(Mouse) Msi1 Antibody (Center)

Purified Rabbit Polyclonal Antibody (Pab)

Catalog # AP20968a

Product Information

Application	WB, E
Primary Accession	Q61474
Reactivity	Human, Rat, Mouse
Host	Rabbit
Clonality	Polyclonal
Isotype	Rabbit IgG
Clone Names	RB51510
Calculated MW	39119

Additional Information

Gene ID	17690
Other Names	RNA-binding protein Musashi homolog 1, Musashi-1, Msi1, Msi1h
Target/Specificity	This mouse Msi1 antibody is generated from a rabbit immunized with a KLH conjugated synthetic peptide between 81-113 amino acids from the Central region of mouse Msi1.
Dilution	WB~~1:1000 E~~Use at an assay dependent concentration.
Format	Purified polyclonal antibody supplied in PBS with 0.09% (W/V) sodium azide. This antibody is purified through a protein A column, followed by peptide affinity purification.
Storage	Maintain refrigerated at 2-8°C for up to 2 weeks. For long term storage store at -20°C in small aliquots to prevent freeze-thaw cycles.
Precautions	(Mouse) Msi1 Antibody (Center) is for research use only and not for use in diagnostic or therapeutic procedures.

Protein Information

Name	Msi1
Synonyms	Msi1h
Function	RNA binding protein that regulates the expression of target mRNAs at the translation level. Regulates expression of the NOTCH1 antagonist NUMB. Binds RNA containing the sequence 5'-GUUAGUUAGUUAGUU- 3' and other sequences containing the pattern 5'-[GA]U(1-3)AGU-3'. May play a role in the

proliferation and maintenance of stem cells in the central nervous system.

Cellular Location

Cytoplasm. Nucleus

Tissue Location

Expressed in neural stem and progenitor cells (at protein level) (PubMed:16554442). Detected in olfactory bulb, brain stem, small intestine, and at low levels in brain cortex, hippocampus and ovary (PubMed:8660864). Detected in neural progenitor cells, including neural stem cells (PubMed:8660864)

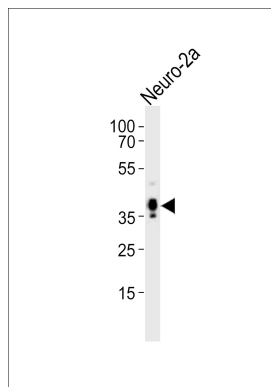
Background

RNA binding protein that regulates the expression of target mRNAs at the translation level. Regulates expression of the NOTCH1 antagonist NUMB. Binds RNA containing the sequence 5'-GUUAGUUAGUUAGUU-3' and other sequences containing the pattern 5'-[GA]U(1-3)AGU-3'. May play a role in the proliferation and maintenance of stem cells in the central nervous system.

References

Sakakibara S.,et al.Dev. Biol. 176:230-242(1996).
Carninci P.,et al.Science 309:1559-1563(2005).
Imai T.,et al.Mol. Cell. Biol. 21:3888-3900(2001).
Sakakibara S.,et al.Proc. Natl. Acad. Sci. U.S.A. 99:15194-15199(2002).
Nagata T.,et al.J. Mol. Biol. 287:315-330(1999).

Images



Western blot analysis of lysate from Neuro-2a cell line, using (Mouse) Msi1 Antibody (Center)(Cat. #AP20968a). AP20968a was diluted at 1:1000. A goat anti-rabbit IgG H&L(HRP) at 1:10000 dilution was used as the secondary antibody. Lysate at 20ug.

Please note: All products are 'FOR RESEARCH USE ONLY. NOT FOR USE IN DIAGNOSTIC OR THERAPEUTIC PROCEDURES'.