

IHH Antibody (C-term)

Purified Rabbit Polyclonal Antibody (Pab)

Catalog # AP20973c

Product Information

Application	WB, E
Primary Accession	Q14623
Reactivity	Human, Mouse
Host	Rabbit
Clonality	Polyclonal
Isotype	Rabbit IgG
Clone Names	RB51618
Calculated MW	45251

Additional Information

Gene ID	3549
Other Names	Indian hedgehog protein, IHH, HHG-2, Indian hedgehog protein N-product, Indian hedgehog protein C-product, IHH
Target/Specificity	This IHH antibody is generated from a rabbit immunized with a KLH conjugated synthetic peptide between 397-431 amino acids from the C-terminal region of human IHH.
Dilution	WB~~1:1000 E~~Use at an assay dependent concentration.
Format	Purified polyclonal antibody supplied in PBS with 0.09% (W/V) sodium azide. This antibody is purified through a protein A column, followed by peptide affinity purification.
Storage	Maintain refrigerated at 2-8°C for up to 2 weeks. For long term storage store at -20°C in small aliquots to prevent freeze-thaw cycles.
Precautions	IHH Antibody (C-term) is for research use only and not for use in diagnostic or therapeutic procedures.

Protein Information

Name	IHH (HGNC:5956)
Function	Plays a role in embryonic morphogenesis; it is involved in the regulation of endochondral skeleton formation, and the development of retinal pigment epithelium (RPE), photoreceptors and periocular tissues (By similarity).
Cellular Location	[Indian hedgehog protein N-product]: Cell membrane; Lipid-anchor

{ECO:0000250|UniProtKB:Q62226}. Note=The N-product remains associated with the cell surface. {ECO:0000250|UniProtKB:Q15465}

Tissue Location

Expressed in embryonic lung, and in adult kidney and liver

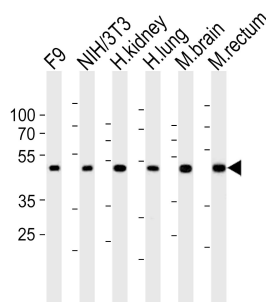
Background

Intercellular signal essential for a variety of patterning events during development. Binds to the patched (PTC) receptor, which functions in association with smoothened (SMO), to activate the transcription of target genes. Implicated in endochondral ossification: may regulate the balance between growth and ossification of the developing bones. Induces the expression of parathyroid hormone-related protein (PTHrP) (By similarity).

References

Tate G.,et al.J. Biochem. Mol. Biol. Biophys. 4:27-34(2000).
Mural R.J.,et al.Submitted (JUL-2005) to the EMBL/GenBank/DDBJ databases.
Marigo V.,et al.Genomics 28:44-51(1995).
Chang D.T.,et al.Development 120:3339-3353(1994).
Pepinsky R.B.,et al.J. Biol. Chem. 273:14037-14045(1998).

Images



Western blot analysis of lysates from mouse F9, mouse NIH/3T3 cell line, human kidney, human lung, mouse brain, mouse rectum tissue (from left to right), using IHH Antibody (C-term)(Cat. #AP20973c). AP20973c was diluted at 1:1000 at each lane. A goat anti-rabbit IgG H&L(HRP) at 1:10000 dilution was used as the secondary antibody. Lysates at 20ug per lane.

Please note: All products are 'FOR RESEARCH USE ONLY. NOT FOR USE IN DIAGNOSTIC OR THERAPEUTIC PROCEDURES'.