

HES5 Antibody (Center)

Purified Rabbit Polyclonal Antibody (Pab)

Catalog # AP20976a

Product Information

Application	WB, E
Primary Accession	Q5TA89
Reactivity	Human, Rat, Mouse
Host	Rabbit
Clonality	Polyclonal
Isotype	Rabbit IgG
Clone Names	RB51477
Calculated MW	18226

Additional Information

Gene ID	388585
Other Names	Transcription factor HES-5, Class B basic helix-loop-helix protein 38, bHLHb38, Hairy and enhancer of split 5, HES5, BHLHB38
Target/Specificity	This HES5 antibody is generated from a rabbit immunized with a KLH conjugated synthetic peptide between 81-115 amino acids from the Central region of human HES5.
Dilution	WB~~1:1000 E~~Use at an assay dependent concentration.
Format	Purified polyclonal antibody supplied in PBS with 0.09% (W/V) sodium azide. This antibody is purified through a protein A column, followed by peptide affinity purification.
Storage	Maintain refrigerated at 2-8°C for up to 2 weeks. For long term storage store at -20°C in small aliquots to prevent freeze-thaw cycles.
Precautions	HES5 Antibody (Center) is for research use only and not for use in diagnostic or therapeutic procedures.

Protein Information

Name	HES5
Synonyms	BHLHB38
Function	Transcriptional repressor of genes that require a bHLH protein for their transcription. Plays an important role as neurogenesis negative regulator (By similarity).

Cellular Location Nucleus {ECO:0000255 | PROSITE-ProRule:PRU00380, ECO:0000255 | PROSITE-ProRule:PRU00981}

Tissue Location Expressed in fetal heart and brain tumors.

Background

Transcriptional repressor of genes that require a bHLH protein for their transcription. Plays an important role as neurogenesis negative regulator (By similarity).

References

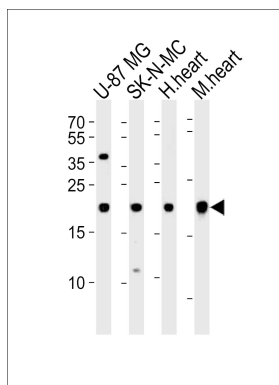
Wistow G.,et al.Submitted (NOV-2005) to the EMBL/GenBank/DDBJ databases.

Gregory S.G.,et al.Nature 441:315-321(2006).

Mural R.J.,et al.Submitted (JUL-2005) to the EMBL/GenBank/DDBJ databases.

Katoh M.,et al.Int. J. Oncol. 25:529-534(2004).

Images



Western blot analysis of lysates from U-87 MG, SK-N-MC cell line, human heart and mouse heart tissue(from left to right), using HES5 Antibody (Center)(Cat. #AP20976a). AP20976a was diluted at 1:1000 at each lane. A goat anti-rabbit IgG H&L(HRP) at 1:10000 dilution was used as the secondary antibody. Lysates at 20ug per lane.

Please note: All products are 'FOR RESEARCH USE ONLY. NOT FOR USE IN DIAGNOSTIC OR THERAPEUTIC PROCEDURES'.