

PAX6 Antibody (Center)

Purified Rabbit Polyclonal Antibody (Pab)

Catalog # AP20979a

Product Information

Application	WB, E
Primary Accession	P26367
Reactivity	Human, Mouse
Host	Rabbit
Clonality	Polyclonal
Isotype	Rabbit IgG
Clone Names	RB51294
Calculated MW	46683

Additional Information

Gene ID	5080
Other Names	Paired box protein Pax-6, Aniridia type II protein, Oculorhombin, PAX6, AN2
Target/Specificity	This PAX6 antibody is generated from a rabbit immunized with a KLH conjugated synthetic peptide between 183-214 amino acids from the Central region of human PAX6.
Dilution	WB~~1:1000 E~~Use at an assay dependent concentration.
Format	Purified polyclonal antibody supplied in PBS with 0.09% (W/V) sodium azide. This antibody is purified through a protein A column, followed by peptide affinity purification.
Storage	Maintain refrigerated at 2-8°C for up to 2 weeks. For long term storage store at -20°C in small aliquots to prevent freeze-thaw cycles.
Precautions	PAX6 Antibody (Center) is for research use only and not for use in diagnostic or therapeutic procedures.

Protein Information

Name	PAX6
Synonyms	AN2
Function	Transcription factor with important functions in the development of the eye, nose, central nervous system and pancreas. Required for the differentiation of pancreatic islet alpha cells (By similarity). Competes with PAX4 in binding to a common element in the glucagon, insulin and somatostatin promoters.

Regulates specification of the ventral neuron subtypes by establishing the correct progenitor domains (By similarity). Acts as a transcriptional repressor of NFATC1- mediated gene expression (By similarity).

Cellular Location Nucleus {ECO:0000250|UniProtKB:P63015}. [Isoform 5a]: Nucleus {ECO:0000250|UniProtKB:P63016}

Tissue Location [Isoform 1]: Expressed in lymphoblasts.

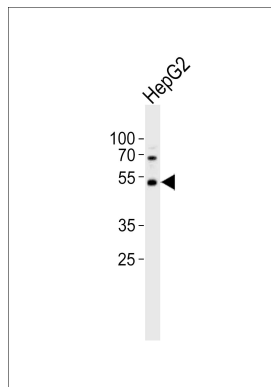
Background

Transcription factor with important functions in the development of the eye, nose, central nervous system and pancreas. Required for the differentiation of pancreatic islet alpha cells (By similarity). Competes with PAX4 in binding to a common element in the glucagon, insulin and somatostatin promoters. Regulates specification of the ventral neuron subtypes by establishing the correct progenitor domains (By similarity). Isoform 5a appears to function as a molecular switch that specifies target genes.

References

Ton C.C.T.,et al.Cell 67:1059-1074(1991).
Glaser T.,et al.Nat. Genet. 2:232-239(1992).
Liu J.,et al.Submitted (JUL-2001) to the EMBL/GenBank/DDBJ databases.
Bechtel S.,et al.BMC Genomics 8:399-399(2007).
Taylor T.D.,et al.Nature 440:497-500(2006).

Images



Western blot analysis of lysate from HepG2 cell line, using PAX6 Antibody (Center)(Cat. #AP20979a). AP20979a was diluted at 1:1000. A goat anti-rabbit IgG H&L(HRP) at 1:10000 dilution was used as the secondary antibody. Lysate at 20ug.

Please note: All products are 'FOR RESEARCH USE ONLY. NOT FOR USE IN DIAGNOSTIC OR THERAPEUTIC PROCEDURES'.