

# (Mouse) Ubtfl1 Antibody (Center)

Purified Rabbit Polyclonal Antibody (Pab)

Catalog # AP20980a

## Product Information

---

Application	WB, E
Primary Accession	<a href="#">Q3USZ2</a>
Reactivity	Mouse
Host	Rabbit
Clonality	Polyclonal
Isotype	Rabbit IgG
Clone Names	RB51511
Calculated MW	46131

## Additional Information

---

Gene ID	546118
Other Names	Upstream-binding factor 1-like protein 1, HMG-box preimplantation embryo-specific protein, HMGPI, Ubtfl1, Hmgpi
Target/Specificity	This Mouse Ubtfl1 antibody is generated from a rabbit immunized with a KLH conjugated synthetic peptide between 186-220 amino acids from the Central region of mouse Ubtfl1.
Dilution	WB~~1:1000 E~~Use at an assay dependent concentration.
Format	Purified polyclonal antibody supplied in PBS with 0.09% (W/V) sodium azide. This antibody is purified through a protein A column, followed by peptide affinity purification.
Storage	Maintain refrigerated at 2-8°C for up to 2 weeks. For long term storage store at -20°C in small aliquots to prevent freeze-thaw cycles.
Precautions	(Mouse) Ubtfl1 Antibody (Center) is for research use only and not for use in diagnostic or therapeutic procedures.

## Protein Information

---

Name	Ubtfl1 {ECO:0000312 MGI:MGI:3588290}
Function	Essential for proliferation of the inner cell mass and trophectodermal cells in peri-implantation development.
Cellular Location	Cytoplasm. Nucleus {ECO:0000255 PROSITE-ProRule:PRU00267, ECO:0000269 PubMed:19915186} Note=Mainly cytoplasmic from the 4-cell

stage to the morula stage Becomes nuclear at the blastocyst stage. In ES cells, found in both the nucleus and the cytoplasm.

## Background

---

Essential for proliferation of the inner cell mass and trophectodermal cells in peri-implantation development.

## References

---

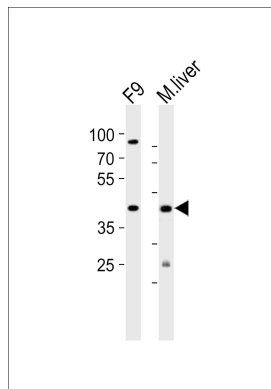
Carninci P.,et al.Science 309:1559-1563(2005).

Mural R.J.,et al.Submitted (JUL-2005) to the EMBL/GenBank/DDBJ databases.

Yamada M.,et al.Hum. Mol. Genet. 19:480-493(2010).

## Images

---



Western blot analysis of lysates from mouse F9 cell line and mouse liver tissue (from left to right), using (Mouse) Ubtfl1 Antibody (Center)(Cat. #AP20980a). AP20980a was diluted at 1:1000 at each lane. A goat anti-rabbit IgG H&L(HRP) at 1:10000 dilution was used as the secondary antibody. Lysates at 20ug per lane.

Please note: All products are 'FOR RESEARCH USE ONLY. NOT FOR USE IN DIAGNOSTIC OR THERAPEUTIC PROCEDURES'.