

ACSM5 Antibody (C-term)

Purified Rabbit Polyclonal Antibody (Pab)
Catalog # AP21000c

Product Information

Application	WB, E
Primary Accession	Q6NUN0
Reactivity	Human, Rat, Mouse
Host	Rabbit
Clonality	Polyclonal
Isotype	Rabbit IgG
Clone Names	RB51554

Additional Information

Other Names	Acyl-coenzyme A synthetase ACSM5, mitochondrial, Acyl-CoA synthetase medium-chain family member 5, ACSM5, MACS3
Target/Specificity	This ACSM5 antibody is generated from a rabbit immunized with a KLH conjugated synthetic peptide between 562-596 amino acids from the C-terminal region of human ACSM5.
Dilution	WB~~1:1000 E~~Use at an assay dependent concentration.
Format	Purified polyclonal antibody supplied in PBS with 0.09% (W/V) sodium azide. This antibody is purified through a protein A column, followed by peptide affinity purification.
Storage	Maintain refrigerated at 2-8°C for up to 2 weeks. For long term storage store at -20°C in small aliquots to prevent freeze-thaw cycles.
Precautions	ACSM5 Antibody (C-term) is for research use only and not for use in diagnostic or therapeutic procedures.

Protein Information

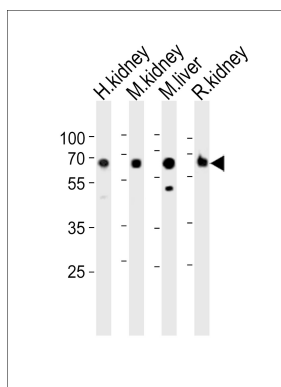
Background

Has medium-chain fatty acid:CoA ligase activity with broad substrate specificity (in vitro). Acts on acids from C(4) to C(11) and on the corresponding 3-hydroxy- and 2,3- or 3,4- unsaturated acids (in vitro) (By similarity).

References

Ota T.,et al.Nat. Genet. 36:40-45(2004).
Martin J.,et al.Nature 432:988-994(2004).
Iwai N.,et al.Hypertension 41:1041-1046(2003).

Images



Western blot analysis of lysates from human kidney, mouse kidney, mouse liver, rat kidney tissue lysate (from left to right), using ACSM5 Antibody (C-term)(Cat. #AP21000c). AP21000c was diluted at 1:1000 at each lane. A goat anti-rabbit IgG H&L(HRP) at 1:10000 dilution was used as the secondary antibody. Lysates at 20ug per lane.

Please note: All products are 'FOR RESEARCH USE ONLY. NOT FOR USE IN DIAGNOSTIC OR THERAPEUTIC PROCEDURES'.