

MSI1 Antibody (Center)

Purified Rabbit Polyclonal Antibody (Pab)

Catalog # AP21004a

Product Information

Application	WB, E
Primary Accession	O43347
Reactivity	Human, Rat, Mouse
Host	Rabbit
Clonality	Polyclonal
Isotype	Rabbit IgG
Clone Names	RB51230
Calculated MW	39125

Additional Information

Gene ID	4440
Other Names	RNA-binding protein Musashi homolog 1, Musashi-1, MSI1
Target/Specificity	This MSI1 antibody is generated from a rabbit immunized with a KLH conjugated synthetic peptide between 144-176 amino acids from the Central region of human MSI1.
Dilution	WB~~1:1000 E~~Use at an assay dependent concentration.
Format	Purified polyclonal antibody supplied in PBS with 0.09% (W/V) sodium azide. This antibody is purified through a protein A column, followed by peptide affinity purification.
Storage	Maintain refrigerated at 2-8°C for up to 2 weeks. For long term storage store at -20°C in small aliquots to prevent freeze-thaw cycles.
Precautions	MSI1 Antibody (Center) is for research use only and not for use in diagnostic or therapeutic procedures.

Protein Information

Name	MSI1
Function	RNA binding protein that regulates the expression of target mRNAs at the translation level. Regulates expression of the NOTCH1 antagonist NUMB. Binds RNA containing the sequence 5'-GUUAGUUAGUUAGUU- 3' and other sequences containing the pattern 5'-[GA]U(1-3)AGU-3'. May play a role in the proliferation and maintenance of stem cells in the central nervous system (By similarity).

Cellular Location	Cytoplasm {ECO:0000250 UniProtKB:Q61474}. Nucleus {ECO:0000250 UniProtKB:Q61474}
Tissue Location	Detected in fetal kidney, brain, liver and lung, and in adult brain and pancreas. Detected in hepatoma cell lines

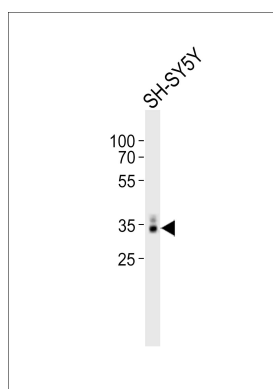
Background

RNA binding protein that regulates the expression of target mRNAs at the translation level. Regulates expression of the NOTCH1 antagonist NUMB. Binds RNA containing the sequence 5'-GUUAGUUAGUUAGUU-3' and other sequences containing the pattern 5'-[GA]U(1-3)AGU-3'. May play a role in the proliferation and maintenance of stem cells in the central nervous system (By similarity).

References

Good P.,et al.Genomics 52:382-384(1998).
Scherer S.E.,et al.Nature 440:346-351(2006).
Shu H.-J.,et al.Biochem. Biophys. Res. Commun. 293:150-154(2002).
Okano H.,et al.J. Cell Sci. 115:1355-1359(2002).
Gauci S.,et al.Anal. Chem. 81:4493-4501(2009).

Images



Western blot analysis of lysate from SH-SY5Y cell line, using MSI1 Antibody (Center)(Cat. #AP21004a). AP21004a was diluted at 1:1000. A goat anti-rabbit IgG H&L(HRP) at 1:10000 dilution was used as the secondary antibody. Lysate at 20ug.

Please note: All products are 'FOR RESEARCH USE ONLY. NOT FOR USE IN DIAGNOSTIC OR THERAPEUTIC PROCEDURES'.