

# SKOR2 Antibody (C-term)

Purified Rabbit Polyclonal Antibody (Pab)

Catalog # AP21005c

## Product Information

---

Application	WB, IF, E
Primary Accession	<a href="#">Q2VWA4</a>
Reactivity	Human, Mouse
Host	Rabbit
Clonality	Polyclonal
Isotype	Rabbit IgG
Clone Names	RB51023
Calculated MW	105809

## Additional Information

---

Gene ID	652991
Other Names	SKI family transcriptional corepressor 2, Functional Smad-suppressing element on chromosome 18, Fussel-18, LBX1 corepressor 1-like protein, Ladybird homeobox corepressor 1-like protein, SKOR2, CORL2, FUSSEL18
Target/Specificity	This SKOR2 antibody is generated from a rabbit immunized with a KLH conjugated synthetic peptide between 741-775 amino acids from the C-terminal region of human SKOR2.
Dilution	WB~~1:2000 IF~~1:2000 E~~Use at an assay dependent concentration.
Format	Purified polyclonal antibody supplied in PBS with 0.09% (W/V) sodium azide. This antibody is purified through a protein A column, followed by peptide affinity purification.
Storage	Maintain refrigerated at 2-8°C for up to 2 weeks. For long term storage store at -20°C in small aliquots to prevent freeze-thaw cycles.
Precautions	SKOR2 Antibody (C-term) is for research use only and not for use in diagnostic or therapeutic procedures.

## Protein Information

---

Name	SKOR2 ( <a href="#">HGNC:32695</a> )
Synonyms	CORL2, FUSSEL18
Function	Exhibits transcriptional repressor activity (By similarity). Acts as a TGF-beta antagonist in the nervous system.

**Cellular Location**

Nucleus. Cytoplasm

**Tissue Location**

Expressed in cerebellum, spinal cord and testis. Isoform 2 is present in cerebellum (at protein level)

## Background

---

Exhibits transcriptional repressor activity (By similarity). Acts as a TGF-beta antagonist in the nervous system.

## References

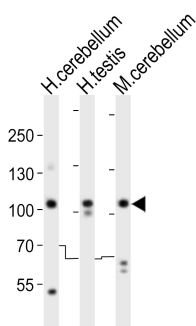
---

Arndt S.,et al.Lab. Invest. 85:1330-1341(2005).

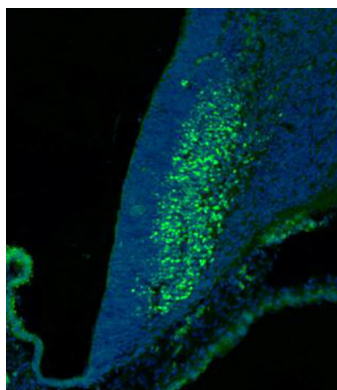
Nusbaum C.,et al.Nature 437:551-555(2005).

## Images

---



Western blot analysis of lysates from human cerebellum, human testis, mouse cerebellum tissue lysate (from left to right), using SKOR2 Antibody (C-term)(Cat. #AP21005c). AP21005c was diluted at 1:1000 at each lane. A goat anti-rabbit IgG H&L(HRP) at 1:10000 dilution was used as the secondary antibody. Lysates at 20ug per lane.



AP21005c staining SKOR2 in mouse cerebellum at embryonic stage 12.5 sections by Immunohistochemistry (IHC-P - 4%paraformaldehyde-fixed, cryopreserved in 30% sucrose/1X PBS for 30 hours, and then cut at a cryotome). Tissue was fixed with formaldehyde and blocked with 3% BSA for 0.5 hour at room temperature. Samples were incubated with primary antibody (1/2000) for 1 hours at 37°C.Immunofluorescence image showing purkinje cell neurons staining on mouse cerebellum tissue.The nuclear counter stain is DAPI (blue).

Please note: All products are 'FOR RESEARCH USE ONLY. NOT FOR USE IN DIAGNOSTIC OR THERAPEUTIC PROCEDURES'.