

# TAL1 Antibody (C-term)

Purified Rabbit Polyclonal Antibody (Pab)

Catalog # AP21012c

## Product Information

---

<b>Application</b>	WB, E
<b>Primary Accession</b>	<a href="#">P17542</a>
<b>Reactivity</b>	Human, Mouse
<b>Host</b>	Rabbit
<b>Clonality</b>	Polyclonal
<b>Isotype</b>	Rabbit IgG
<b>Clone Names</b>	RB51416
<b>Calculated MW</b>	34271

## Additional Information

---

<b>Gene ID</b>	6886
<b>Other Names</b>	T-cell acute lymphocytic leukemia protein 1, TAL-1, Class A basic helix-loop-helix protein 17, bHLHa17, Stem cell protein, T-cell leukemia/lymphoma protein 5, TAL1, BHLHA17, SCL, TCL5
<b>Target/Specificity</b>	This TAL1 antibody is generated from rabbits immunized with a KLH conjugated synthetic peptide between 241-275 amino acids from the C-terminal region of human TAL1.
<b>Dilution</b>	WB~~1:1000 E~~Use at an assay dependent concentration.
<b>Format</b>	Purified polyclonal antibody supplied in PBS with 0.09% (W/V) sodium azide. This antibody is purified through a protein A column, followed by peptide affinity purification.
<b>Storage</b>	Maintain refrigerated at 2-8°C for up to 2 weeks. For long term storage store at -20°C in small aliquots to prevent freeze-thaw cycles.
<b>Precautions</b>	TAL1 Antibody (C-term) is for research use only and not for use in diagnostic or therapeutic procedures.

## Protein Information

---

<b>Name</b>	TAL1
<b>Synonyms</b>	BHLHA17, SCL, TCL5
<b>Function</b>	Implicated in the genesis of hemopoietic malignancies. It may play an important role in hemopoietic differentiation. Serves as a positive regulator of

erythroid differentiation (By similarity).

**Cellular Location**

Nucleus {ECO:0000255|PROSITE-ProRule:PRU00981}.

**Tissue Location**

Leukemic stem cell.

## Background

---

Implicated in the genesis of hemopoietic malignancies. It may play an important role in hemopoietic differentiation. Serves as a positive regulator of erythroid differentiation (By similarity).

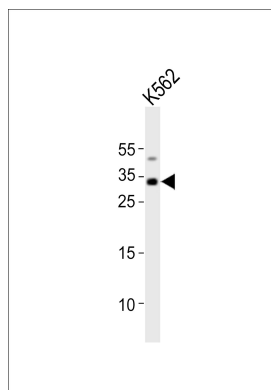
## References

---

Aplan P.D.,et al.Mol. Cell. Biol. 10:6426-6435(1990). Gregory S.G.,et al.Nature 441:315-321(2006). Mural R.J.,et al.Submitted (SEP-2005) to the EMBL/GenBank/DDBJ databases. Chen Q.,et al.J. Exp. Med. 172:1403-1408(1990). Begley C.G.,et al.Proc. Natl. Acad. Sci. U.S.A. 86:10128-10132(1989).

## Images

---



Western blot analysis of lysate from K562 cell line, using TAL1 Antibody (C-term)(Cat. #AP21012c). AP21012c was diluted at 1:1000. A goat anti-rabbit IgG H&L(HRP) at 1:10000 dilution was used as the secondary antibody. Lysate at 20ug.

Please note: All products are 'FOR RESEARCH USE ONLY. NOT FOR USE IN DIAGNOSTIC OR THERAPEUTIC PROCEDURES'.