

TLE1 Antibody (N-term)

Purified Rabbit Polyclonal Antibody (Pab)

Catalog # AP21016a

Product Information

Application	WB, IF, E
Primary Accession	Q04724
Reactivity	Human, Mouse
Host	Rabbit
Clonality	Polyclonal
Isotype	Rabbit IgG
Clone Names	RB51384
Calculated MW	83201

Additional Information

Gene ID	7088
Other Names	Transducin-like enhancer protein 1, E(Sp1) homolog, Enhancer of split groucho-like protein 1, ESG1, TLE1
Target/Specificity	This TLE1 antibody is generated from a rabbit immunized with a KLH conjugated synthetic peptide between 187-221 amino acids from the N-terminal region of human TLE1.
Dilution	WB~~1:1000 IF~~1:25 E~~Use at an assay dependent concentration.
Format	Purified polyclonal antibody supplied in PBS with 0.09% (W/V) sodium azide. This antibody is purified through a protein A column, followed by peptide affinity purification.
Storage	Maintain refrigerated at 2-8°C for up to 2 weeks. For long term storage store at -20°C in small aliquots to prevent freeze-thaw cycles.
Precautions	TLE1 Antibody (N-term) is for research use only and not for use in diagnostic or therapeutic procedures.

Protein Information

Name	TLE1
Function	Transcriptional corepressor that binds to a number of transcription factors. Inhibits NF-kappa-B-regulated gene expression. Inhibits the transcriptional activation mediated by FOXA2, and by CTNNB1 and TCF family members in Wnt signaling. Enhances FOXG1/BF- 1- and HES1-mediated transcriptional repression (By similarity). The effects of full-length TLE family members may

be modulated by association with dominant-negative AES. Unusual function as coactivator for ESRRG.

Cellular Location

Nucleus. Note=Nuclear and chromatin-associated, depending on isoforms and phosphorylation status. Hyperphosphorylation decreases the affinity for nuclear components

Tissue Location

In all tissues examined, mostly in brain, liver and muscle

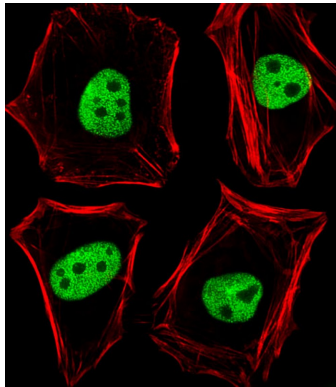
Background

Transcriptional corepressor that binds to a number of transcription factors. Inhibits NF-kappa-B-regulated gene expression. Inhibits the transcriptional activation mediated by FOXA2, and by CTNNB1 and TCF family members in Wnt signaling. The effects of full-length TLE family members may be modulated by association with dominant-negative AES. Unusual function as coactivator for ESRRG.

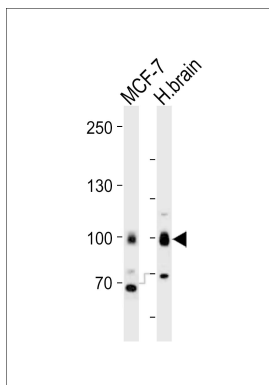
References

- Stifani S.,et al.Nat. Genet. 2:119-127(1992).
Ota T.,et al.Nat. Genet. 36:40-45(2004).
Humphray S.J.,et al.Nature 429:369-374(2004).
Mural R.J.,et al.Submitted (JUL-2005) to the EMBL/GenBank/DDBJ databases.
Wang J.-C.,et al.J. Biol. Chem. 275:18418-18423(2000).

Images



Fluorescent image of HeLa cells stained with TLE1 Antibody (N-term)(Cat#AP21016a). AP21016a was diluted at 1:25 dilution. An Alexa Fluor 488-conjugated goat anti-rabbit IgG at 1:400 dilution was used as the secondary antibody (green). Cytoplasmic actin was counterstained with Alexa Fluor® 555 conjugated with Phalloidin (red).



Western blot analysis of lysates from MCF-7, H.brain cell line (from left to right), using TLE1 Antibody (N-term)(Cat.#AP21016a). AP21016a was diluted at 1:1000 at each lane. A goat anti-rabbit IgG H&L(HRP) at 1:10000 dilution was used as the secondary antibody. Lysates at 20ug per lane.