

# FAM168B Antibody (C-term)

Purified Rabbit Polyclonal Antibody (Pab)

Catalog # AP21018c

## Product Information

---

Application	WB, E
Primary Accession	<a href="#">A1KXE4</a>
Reactivity	Human, Rat, Mouse
Host	Rabbit
Clonality	Polyclonal
Isotype	Rabbit IgG
Clone Names	RB50857
Calculated MW	20324

## Additional Information

---

Gene ID	130074
Other Names	Myelin-associated neurite-outgrowth inhibitor, Mani, p20, FAM168B, KIAA0280L, MANI
Target/Specificity	This FAM168B antibody is generated from a rabbit immunized with a KLH conjugated synthetic peptide between 165-199 amino acids from the C-terminal region of human FAM168B.
Dilution	WB~~1:1000 E~~Use at an assay dependent concentration.
Format	Purified polyclonal antibody supplied in PBS with 0.09% (W/V) sodium azide. This antibody is purified through a protein A column, followed by peptide affinity purification.
Storage	Maintain refrigerated at 2-8°C for up to 2 weeks. For long term storage store at -20°C in small aliquots to prevent freeze-thaw cycles.
Precautions	FAM168B Antibody (C-term) is for research use only and not for use in diagnostic or therapeutic procedures.

## Protein Information

---

Name	FAM168B
Synonyms	KIAA0280L, MANI
Function	Inhibitor of neuronal axonal outgrowth. Acts as a negative regulator of CDC42 and STAT3 and a positive regulator of STMN2. Positive regulator of CDC27.

<b>Cellular Location</b>	Cytoplasm, perinuclear region {ECO:0000250 UniProtKB:D4AEP3}. Cell membrane {ECO:0000250 UniProtKB:Q80XQ8}; Multi-pass membrane protein {ECO:0000250 UniProtKB:Q80XQ8}. Cell projection, axon {ECO:0000250 UniProtKB:Q80XQ8}. Note=Expressed in neuronal cell bodies and axonal fibers. {ECO:0000250 UniProtKB:Q80XQ8}
<b>Tissue Location</b>	Expressed in the brain, within neuronal axonal fibers and associated with myelin sheets (at protein level). Expression tends to be lower in the brain of Alzheimer disease patients compared to healthy individuals (at protein level)

## Background

---

Modulates neuronal axonal outgrowth by acting as a negative regulator of CDC42 and STAT3 and a positive regulator of STMN2. Positive regulator of CDC27 (By similarity).

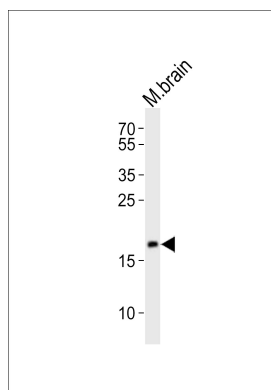
## References

---

Mishra M.,et al.J. Cell. Mol. Med. 15:1713-1725(2011).  
Mural R.J.,et al.Submitted (JUL-2005) to the EMBL/GenBank/DDBJ databases.  
Gauci S.,et al.Anal. Chem. 81:4493-4501(2009).  
Mishra M.,et al.FEBS Lett. 586:3018-3023(2012).

## Images

---



Western blot analysis of lysate from mouse brain tissue lysate, using FAM168B Antibody (C-term)(Cat. #AP21018c). AP21018c was diluted at 1:1000. A goat anti-rabbit IgG H&L(HRP) at 1:10000 dilution was used as the secondary antibody. Lysate at 20ug.

Please note: All products are 'FOR RESEARCH USE ONLY. NOT FOR USE IN DIAGNOSTIC OR THERAPEUTIC PROCEDURES'.