

Mouse Hes1 Antibody (C-term)

Purified Rabbit Polyclonal Antibody (Pab)

Catalog # AP21019c

Product Information

Application	WB, E
Primary Accession	P35428
Reactivity	Human, Rat, Mouse
Host	Rabbit
Clonality	Polyclonal
Isotype	Rabbit IgG
Clone Names	RB51068
Calculated MW	29749

Additional Information

Gene ID	15205
Other Names	Transcription factor HES-1, Hairy and enhancer of split 1, Hes1, Hes-1
Target/Specificity	This Mouse Hes1 antibody is generated from a rabbit immunized with a KLH conjugated synthetic peptide between 205-239 amino acids from the C-terminal region of Mouse Hes1.
Dilution	WB~~1:500 E~~Use at an assay dependent concentration.
Format	Purified polyclonal antibody supplied in PBS with 0.09% (W/V) sodium azide. This antibody is purified through a protein A column, followed by peptide affinity purification.
Storage	Maintain refrigerated at 2-8°C for up to 2 weeks. For long term storage store at -20°C in small aliquots to prevent freeze-thaw cycles.
Precautions	Mouse Hes1 Antibody (C-term) is for research use only and not for use in diagnostic or therapeutic procedures.

Protein Information

Name	Hes1
Synonyms	Hes-1
Function	Transcriptional repressor of genes that require a bHLH protein for their transcription. May act as a negative regulator of myogenesis by inhibiting the functions of MYOD1 and ASH1 (By similarity). Binds DNA on N-box motifs: 5'-CACNAG-3' with high affinity and on E-box motifs: 5'-CANNTG-3' with low

affinity. May play a role in a functional FA core complex response to DNA cross-link damage, being required for the stability and nuclear localization of FA core complex proteins, as well as for FANCD2 monoubiquitination in response to DNA damage (By similarity).

Cellular Location

Nucleus.

Tissue Location

Expressed at high levels in undifferentiated neural precursor cells, but the level of expression decreases as neural differentiation proceeds

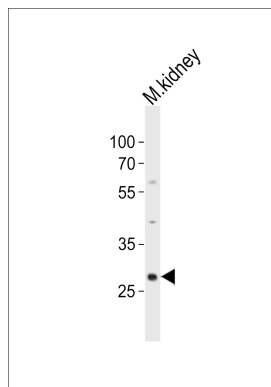
Background

Transcriptional repressor of genes that require a bHLH protein for their transcription. May act as a negative regulator of myogenesis by inhibiting the functions of MYOD1 and ASH1 (By similarity). Binds DNA on N-box motifs: 5'-CACNAG-3' with high affinity and on E-box motifs: 5'-CANNTG-3' with low affinity. May play a role in a functional FA core complex response to DNA cross- link damage, being required for the stability and nuclear localization of FA core complex proteins, as well as for FANCD2 monoubiquitination in response to DNA damage (By similarity).

References

Takebayashi K.,et al.J. Biol. Chem. 269:5150-5156(1994).
Grbavec D.,et al.Eur. J. Biochem. 258:339-349(1998).
Bae S.-K.,et al.Development 127:2933-2943(2000).

Images



Western blot analysis of lysate from mouse kidney tissue lysate, using Hes1 Antibody (C-term)(Cat. #AP21019c). AP21019c was diluted at 1:500. A goat anti-rabbit IgG H&L(HRP) at 1:10000 dilution was used as the secondary antibody. Lysate at 20ug.

Please note: All products are 'FOR RESEARCH USE ONLY. NOT FOR USE IN DIAGNOSTIC OR THERAPEUTIC PROCEDURES'.