

POU5F1B Antibody (N-term)

Purified Rabbit Polyclonal Antibody (Pab)

Catalog # AP21021a

Product Information

| | |
|-------------------|------------------------|
| Application | WB, E |
| Primary Accession | Q06416 |
| Reactivity | Human |
| Host | Rabbit |
| Clonality | Polyclonal |
| Isotype | Rabbit IgG |
| Clone Names | RB51290 |
| Calculated MW | 38588 |

Additional Information

| | |
|--------------------|--|
| Gene ID | 5462 |
| Other Names | Putative POU domain, class 5, transcription factor 1B, Oct4-pg1, Octamer-binding protein 3-like, Octamer-binding transcription factor 3-like, POU5F1B |
| Target/Specificity | This POU5F1B antibody is generated from a rabbit immunized with a KLH conjugated synthetic peptide between 102-135 amino acids from the N-terminal region of human POU5F1B. |
| Dilution | WB~~1:500 E~~Use at an assay dependent concentration. |
| Format | Purified polyclonal antibody supplied in PBS with 0.09% (W/V) sodium azide. This antibody is purified through a protein A column, followed by peptide affinity purification. |
| Storage | Maintain refrigerated at 2-8°C for up to 2 weeks. For long term storage store at -20°C in small aliquots to prevent freeze-thaw cycles. |
| Precautions | POU5F1B Antibody (N-term) is for research use only and not for use in diagnostic or therapeutic procedures. |

Protein Information

| | |
|-------------------|---|
| Name | POU5F1B |
| Function | Shows weak transcriptional activator activity. |
| Cellular Location | Nucleus {ECO:0000255 PROSITE-ProRule:PRU00108, ECO:0000255 PROSITE-ProRule:PRU00530, ECO:0000269 PubMed:18949397} |

Cytoplasm

Tissue Location

Detected in epithelial cells of the prostate (at protein level) (PubMed:20017164). Detected at the mRNA level in several cancer tissues (breast, uterine cervix, lung, thyroid gland, esophagus, colon, urinary bladder, and glioma) (PubMed:16229821, PubMed:21341266)

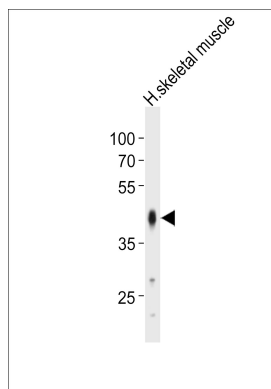
Background

Shows weak transcriptional activator activity.

References

Takeda J., et al. Nucleic Acids Res. 20:4613-4620(1992).
Marques A.C., et al. PLoS Biol. 3:E357-E357(2005).
van Roozendaal K.E.P., et al. Submitted (MAY-2000) to the EMBL/GenBank/DDBJ databases.
Zhao F.-Q., et al. Submitted (APR-2006) to the EMBL/GenBank/DDBJ databases.
Zhao S., et al. Submitted (AUG-2010) to the EMBL/GenBank/DDBJ databases.

Images



Western blot analysis of lysate from human skeletal muscle tissue lysate, using POU5F1B Antibody (N-term)(Cat. #AP21021a). AP21021a was diluted at 1:500. A goat anti-rabbit IgG H&L(HRP) at 1:10000 dilution was used as the secondary antibody. Lysate at 20ug.

Please note: All products are 'FOR RESEARCH USE ONLY. NOT FOR USE IN DIAGNOSTIC OR THERAPEUTIC PROCEDURES'.