

UTF1 Antibody (Center)

Purified Rabbit Polyclonal Antibody (Pab)

Catalog # AP21043a

Product Information

Application	WB, E
Primary Accession	Q5T230
Reactivity	Human
Host	Rabbit
Clonality	Polyclonal
Isotype	Rabbit IgG
Clone Names	RB51421
Calculated MW	36439

Additional Information

Gene ID	8433
Other Names	Undifferentiated embryonic cell transcription factor 1, UTF1 (HGNC:12634)
Target/Specificity	This UTF1 antibody is generated from a rabbit immunized with a KLH conjugated synthetic peptide between 164-199 amino acids from the Central region of human UTF1.
Dilution	WB~~1:1000 E~~Use at an assay dependent concentration.
Format	Purified polyclonal antibody supplied in PBS with 0.09% (W/V) sodium azide. This antibody is purified through a protein A column, followed by peptide affinity purification.
Storage	Maintain refrigerated at 2-8°C for up to 2 weeks. For long term storage store at -20°C in small aliquots to prevent freeze-thaw cycles.
Precautions	UTF1 Antibody (Center) is for research use only and not for use in diagnostic or therapeutic procedures.

Protein Information

Name	UTF1 (HGNC:12634)
Function	Acts as a transcriptional coactivator of ATF2.
Cellular Location	Nucleus.

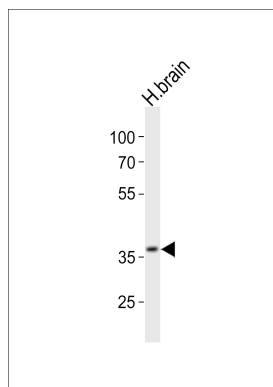
Background

Acts as a transcriptional coactivator of ATF2.

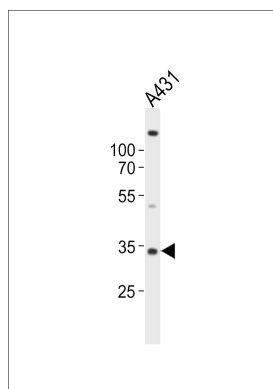
References

Fukushima A.,et al.J. Biol. Chem. 273:25840-25849(1998).
Fukushima A.,et al.Submitted (OCT-2008) to the EMBL/GenBank/DDBJ databases.
Xiang Y.,et al.Submitted (APR-2004) to the EMBL/GenBank/DDBJ databases.
Deloukas P.,et al.Nature 429:375-381(2004).
Rigbolt K.T.,et al.Sci. Signal. 4:RS3-RS3(2011).

Images



Western blot analysis of lysate from human brain tissue lysate , using UTF1 Antibody (Center)(Cat. #AP21043a). AP21043a was diluted at 1:1000. A goat anti-rabbit IgG H&L(HRP) at 1:10000 dilution was used as the secondary antibody. Lysate at 20ug.



Western blot analysis of lysate from A431 cell line, using UTF1 Antibody (Center)(Cat. #AP21043a). AP21043a was diluted at 1:1000. A goat anti-rabbit IgG H&L(HRP) at 1:10000 dilution was used as the secondary antibody. Lysate at 20ug.

Please note: All products are 'FOR RESEARCH USE ONLY. NOT FOR USE IN DIAGNOSTIC OR THERAPEUTIC PROCEDURES'.