

SALL4 Antibody (C-term)

Purified Rabbit Polyclonal Antibody (Pab)

Catalog # AP21044c

Product Information

Application	WB, E
Primary Accession	Q9UJQ4
Reactivity	Human, Mouse
Host	Rabbit
Clonality	Polyclonal
Isotype	Rabbit IgG
Clone Names	RB51469
Calculated MW	112231

Additional Information

Gene ID	57167
Other Names	Sal-like protein 4, Zinc finger protein 797, Zinc finger protein SALL4, SALL4, ZNF797
Target/Specificity	This SALL4 antibody is generated from a rabbit immunized with a KLH conjugated synthetic peptide between 1035-1069 amino acids from the C-terminal region of human SALL4.
Dilution	WB~~1:1000 E~~Use at an assay dependent concentration.
Format	Purified polyclonal antibody supplied in PBS with 0.09% (W/V) sodium azide. This antibody is purified through a protein A column, followed by peptide affinity purification.
Storage	Maintain refrigerated at 2-8°C for up to 2 weeks. For long term storage store at -20°C in small aliquots to prevent freeze-thaw cycles.
Precautions	SALL4 Antibody (C-term) is for research use only and not for use in diagnostic or therapeutic procedures.

Protein Information

Name	SALL4
Synonyms	ZNF797
Function	Transcription factor with a key role in the maintenance and self-renewal of embryonic and hematopoietic stem cells.

Cellular Location	Cytoplasm. Nucleus.
Tissue Location	Expressed in testis. Constitutively expressed in acute myeloid leukemia (AML).

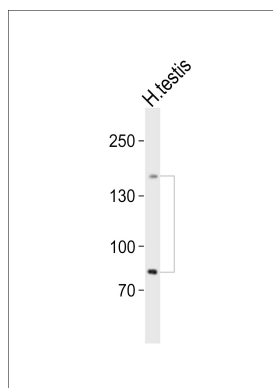
Background

Transcription factor with a key role in the maintenance and self-renewal of embryonic and hematopoietic stem cells.

References

Ma Y.,et al.Blood 108:2726-2735(2006).
 Deloukas P.,et al.Nature 414:865-871(2001).
 Mural R.J.,et al.Submitted (SEP-2005) to the EMBL/GenBank/DDBJ databases.
 Kohlhase J.,et al.Hum. Mol. Genet. 11:2979-2987(2002).
 Dephoure N.,et al.Proc. Natl. Acad. Sci. U.S.A. 105:10762-10767(2008).

Images



Western blot analysis of lysate from human testis tissue lysate, using SALL4 Antibody (C-term)(Cat. #AP21044c). AP21044c was diluted at 1:1000. A goat anti-rabbit IgG H&L(HRP) at 1:10000 dilution was used as the secondary antibody. Lysate at 20ug.

Please note: All products are 'FOR RESEARCH USE ONLY. NOT FOR USE IN DIAGNOSTIC OR THERAPEUTIC PROCEDURES'.