

(Mouse) Gnl3 Antibody (C-term)

Purified Rabbit Polyclonal Antibody (Pab)

Catalog # AP21045a

Product Information

Application	WB, E
Primary Accession	Q8CI11
Reactivity	Human, Rat, Mouse
Host	Rabbit
Clonality	Polyclonal
Isotype	Rabbit IgG
Clone Names	RB51508
Calculated MW	60786

Additional Information

Gene ID	30877
Other Names	Guanine nucleotide-binding protein-like 3, Nucleolar GTP-binding protein 3, Nucleostemin, Gnl3, Ns
Target/Specificity	This Mouse Gnl3 antibody is generated from a rabbit immunized with a KLH conjugated synthetic peptide between 450-483 amino acids from the C-terminal region of mouse Gnl3.
Dilution	WB~~1:1000 E~~Use at an assay dependent concentration.
Format	Purified polyclonal antibody supplied in PBS with 0.09% (W/V) sodium azide. This antibody is purified through a protein A column, followed by peptide affinity purification.
Storage	Maintain refrigerated at 2-8°C for up to 2 weeks. For long term storage store at -20°C in small aliquots to prevent freeze-thaw cycles.
Precautions	(Mouse) Gnl3 Antibody (C-term) is for research use only and not for use in diagnostic or therapeutic procedures.

Protein Information

Name	Gnl3
Synonyms	Ns
Function	May be required to maintain the proliferative capacity of stem cells (By similarity). Stabilizes MDM2 by preventing its ubiquitination, and hence proteasomal degradation.

Cellular Location	Nucleus. Nucleus, nucleolus. Note=Shuttles between the nucleus and nucleolus. {ECO:0000250 UniProtKB:Q811S9}
Tissue Location	Expressed in the adult bone marrow population that is enriched in hematopoietic stem cells.

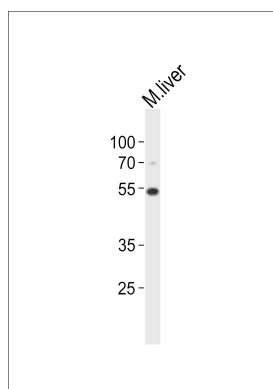
Background

May be required to maintain the proliferative capacity of stem cells (By similarity). Stabilizes MDM2 by preventing its ubiquitination, and hence proteasomal degradation.

References

Tsai R.Y.L.,et al.Genes Dev. 16:2991-3003(2002).
Carninci P.,et al.Science 309:1559-1563(2005).
Trost M.,et al.Immunity 30:143-154(2009).
Meng L.,et al.Oncogene 30:1716-1726(2011).

Images



Western blot analysis of lysate from mouse liver tissue lysate, using Gnl3 Antibody (C-term)(Cat. #AP21045a). AP21045a was diluted at 1:1000. A goat anti-rabbit IgG H&L(HRP) at 1:10000 dilution was used as the secondary antibody. Lysate at 20ug.

Please note: All products are 'FOR RESEARCH USE ONLY. NOT FOR USE IN DIAGNOSTIC OR THERAPEUTIC PROCEDURES'.