

(Mouse) Tdgf1 Antibody (N-term)

Purified Rabbit Polyclonal Antibody (Pab)

Catalog # AP21046a

Product Information

Application	WB, E
Primary Accession	P51865
Reactivity	Mouse
Host	Rabbit
Clonality	Polyclonal
Isotype	Rabbit IgG
Clone Names	RB51516
Calculated MW	18655

Additional Information

Gene ID	21667
Other Names	Teratocarcinoma-derived growth factor, Cripto growth factor, Epidermal growth factor-like Cripto protein, Tdgf1, Cripto
Target/Specificity	This Mouse Tdgf1 antibody is generated from a rabbit immunized with a KLH conjugated synthetic peptide between 37-70 amino acids from the N-terminal region of mouse Tdgf1.
Dilution	WB~~1:1000 E~~Use at an assay dependent concentration.
Format	Purified polyclonal antibody supplied in PBS with 0.09% (W/V) sodium azide. This antibody is purified through a protein A column, followed by peptide affinity purification.
Storage	Maintain refrigerated at 2-8°C for up to 2 weeks. For long term storage store at -20°C in small aliquots to prevent freeze-thaw cycles.
Precautions	(Mouse) Tdgf1 Antibody (N-term) is for research use only and not for use in diagnostic or therapeutic procedures.

Protein Information

Name	Cripto
Synonyms	Tdgf1
Function	GPI-anchored cell membrane protein involved in Nodal signaling. Cell-associated CRIPTO acts as a Nodal coreceptor in cis. Shedding of CRIPTO by Tmem8a modulates Nodal signaling by allowing soluble CRIPTO to act as a

Nodal coreceptor on other cells. Could play a role in the determination of the epiblastic cells that subsequently give rise to the mesoderm.

Cellular Location

Cell membrane; Lipid-anchor, GPI-anchor. Secreted {ECO:0000250|UniProtKB:P13385}. Note=Released from the cell membrane by GPI cleavage. {ECO:0000250|UniProtKB:P13385}

Tissue Location

Expressed at low level in specific organs of the adult animal such as spleen, heart, lung and brain. During gastrulation, expressed in the forming mesoderm. In later stages of the developing heart, expression is restricted to the truncus arteriosus

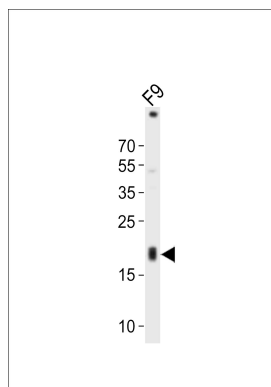
Background

Could play a role in the determination of the epiblastic cells that subsequently give rise to the mesoderm.

References

Dono R.,et al.Development 118:1157-1168(1993).
Liguori G.,et al.Mamm. Genome 7:344-348(1996).
Minchiotti G.,et al.Mech. Dev. 90:133-142(2000).
Calvanese L.,et al.J. Med. Chem. 49:7054-7062(2006).

Images



Western blot analysis of lysate from mouse F9 cell line, using Tdgf1 Antibody (N-term)(Cat. #AP21046a). AP21046a was diluted at 1:1000. A goat anti-rabbit IgG H&L(HRP) at 1:10000 dilution was used as the secondary antibody. Lysate at 20ug.

Please note: All products are 'FOR RESEARCH USE ONLY. NOT FOR USE IN DIAGNOSTIC OR THERAPEUTIC PROCEDURES'.