

# ITGB8 Antibody (Center)

Purified Rabbit Polyclonal Antibody (Pab)

Catalog # AP21056a

## Product Information

---

<b>Application</b>	WB, IHC-P, E
<b>Primary Accession</b>	<a href="#">P26012</a>
<b>Reactivity</b>	Human, Rat, Mouse
<b>Host</b>	Rabbit
<b>Clonality</b>	Polyclonal
<b>Isotype</b>	Rabbit IgG
<b>Clone Names</b>	RB51854
<b>Calculated MW</b>	85632

## Additional Information

---

<b>Gene ID</b>	3696
<b>Other Names</b>	Integrin beta-8, ITGB8
<b>Target/Specificity</b>	This ITGB8 antibody is generated from a rabbit immunized with a KLH conjugated synthetic peptide between 197-231 amino acids from the Central region of human ITGB8.
<b>Dilution</b>	WB~~1:1000 IHC-P~~1:100~500 E~~Use at an assay dependent concentration.
<b>Format</b>	Purified polyclonal antibody supplied in PBS with 0.05% (V/V) Proclin 300. This antibody is prepared by Saturated Ammonium Sulfate (SAS) precipitation followed by dialysis against PBS.
<b>Storage</b>	Maintain refrigerated at 2-8°C for up to 2 weeks. For long term storage store at -20°C in small aliquots to prevent freeze-thaw cycles.
<b>Precautions</b>	ITGB8 Antibody (Center) is for research use only and not for use in diagnostic or therapeutic procedures.

## Protein Information

---

<b>Name</b>	ITGB8 ( <a href="#">HGNC:6163</a> )
<b>Function</b>	Integrin alpha-V:beta-8 (ITGAV:ITGB8) is a receptor for fibronectin (PubMed: <a href="#">1918072</a> ). It recognizes the sequence R-G-D in its ligands (PubMed: <a href="#">1918072</a> ). Integrin alpha-V:beta-6 (ITGAV:ITGB6) mediates R-G-D-dependent release of transforming growth factor beta-1 (TGF-beta-1) from regulatory Latency-associated peptide (LAP), thereby playing a key role in TGF-beta-1 activation on the surface of activated regulatory T-cells (Tregs)

(Probable). Required during vasculogenesis (By similarity).

**Cellular Location**

Cell membrane; Single-pass type I membrane protein

**Tissue Location**

Placenta, kidney, brain, ovary, uterus and in several transformed cells.  
Transiently expressed in 293 human embryonic kidney cells.

## Background

---

Integrin alpha-V/beta-8 is a receptor for fibronectin.

## References

---

Moyle M.,et al.J. Biol. Chem. 266:19650-19658(1991).

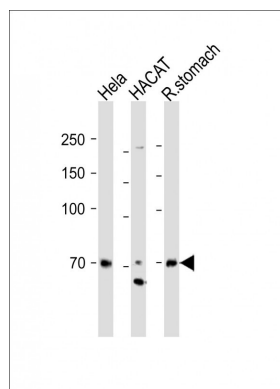
Scherer S.W.,et al.Science 300:767-772(2003).

Mural R.J.,et al.Submitted (JUL-2005) to the EMBL/GenBank/DDBJ databases.

Hillier L.W.,et al.Nature 424:157-164(2003).

## Images

---



All lanes : Anti-ITGB8 Antibody (Center) at 1:1000 dilution  
Lane 1 : HeLa whole cell lysate Lane 2 : HACAT whole cell lysate Lane 3 : Rat stomach lysate Lysates/proteins at 20 µg per lane. Secondary Goat Anti-Rabbit IgG, (H+L), Peroxidase conjugated (ASP1615) at 1/15000 dilution.  
Observed band size : 70kDa Blocking/Dilution buffer : 5% NFDM/TBST.

Please note: All products are 'FOR RESEARCH USE ONLY. NOT FOR USE IN DIAGNOSTIC OR THERAPEUTIC PROCEDURES'.