

DECR1 Antibody (Center)

Purified Rabbit Polyclonal Antibody (Pab)

Catalog # AP21057a

Product Information

Application	WB, E
Primary Accession	Q16698
Reactivity	Human, Rat, Mouse
Host	Rabbit
Clonality	Polyclonal
Isotype	Rabbit IgG
Clone Names	RB49273
Calculated MW	36068

Additional Information

Gene ID	1666
Other Names	4-dienoyl-CoA reductase, mitochondrial, 4-dienoyl-CoA reductase [NADPH], 4-enoyl-CoA reductase [NADPH], DECR1, DECR
Target/Specificity	This DECR1 antibody is generated from a rabbit immunized with a KLH conjugated synthetic peptide between 241-274 amino acids from the Central region of human DECR1.
Dilution	WB~~1:1000 E~~Use at an assay dependent concentration.
Format	Purified polyclonal antibody supplied in PBS with 0.09% (W/V) sodium azide. This antibody is purified through a protein A column, followed by peptide affinity purification.
Storage	Maintain refrigerated at 2-8°C for up to 2 weeks. For long term storage store at -20°C in small aliquots to prevent freeze-thaw cycles.
Precautions	DECR1 Antibody (Center) is for research use only and not for use in diagnostic or therapeutic procedures.

Protein Information

Name	DECR1
Synonyms	DECR, SDR18C1
Function	Auxiliary enzyme of beta-oxidation. It participates in the metabolism of unsaturated fatty enoyl-CoA esters having double bonds in both even- and odd-numbered positions in mitochondria. Catalyzes the NADP-dependent

reduction of 2,4-dienoyl-CoA to yield trans-3-enoyl-CoA.

Cellular Location Mitochondrion.

Tissue Location Heart = liver = pancreas > kidney >> skeletal muscle = lung.

Background

Auxiliary enzyme of beta-oxidation. It participates in the metabolism of unsaturated fatty enoyl-CoA esters having double bonds in both even- and odd-numbered positions. Catalyzes the NADP-dependent reduction of 2,4-dienoyl-CoA to yield trans-3- enoyl-CoA.

References

Koivuranta K.T.,et al.Biochem. J. 304:787-792(1994).

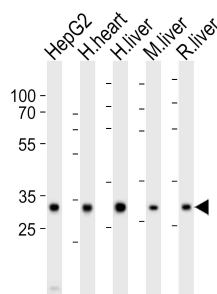
Ding J.H.,et al.Submitted (OCT-1996) to the EMBL/GenBank/DDBJ databases.

Helander H.M.,et al.Genomics 46:112-119(1997).

Nusbaum C.,et al.Nature 439:331-335(2006).

Choudhary C.,et al.Science 325:834-840(2009).

Images



Western blot analysis of lysates from HepG2 cell line, human heart, human liver, mouse liver, rat liver tissue lysate (from left to right), using DECR1 Antibody (Center)(Cat. #AP21057a). AP21057a was diluted at 1:1000 at each lane. A goat anti-rabbit IgG H&L(HRP) at 1:10000 dilution was used as the secondary antibody. Lysates at 20ug per lane.

Please note: All products are 'FOR RESEARCH USE ONLY. NOT FOR USE IN DIAGNOSTIC OR THERAPEUTIC PROCEDURES'.