

# TMEM160 Antibody (N-term)

Purified Rabbit Polyclonal Antibody (Pab)

Catalog # AP21058a

## Product Information

---

Application	WB, E
Primary Accession	<a href="#">Q9NX00</a>
Reactivity	Human, Mouse
Host	Rabbit
Clonality	Polyclonal
Isotype	Rabbit IgG
Clone Names	RB49633
Calculated MW	19658

## Additional Information

---

Gene ID	54958
Other Names	Transmembrane protein 160, TMEM160
Target/Specificity	This TMEM160 antibody is generated from a rabbit immunized with a KLH conjugated synthetic peptide between 32-64 amino acids from the N-terminal region of human TMEM160.
Dilution	WB~~1:1000 E~~Use at an assay dependent concentration.
Format	Purified polyclonal antibody supplied in PBS with 0.05% (V/V) Proclin 300. This antibody is purified through a protein A column, followed by peptide affinity purification.
Storage	Maintain refrigerated at 2-8°C for up to 2 weeks. For long term storage store at -20°C in small aliquots to prevent freeze-thaw cycles.
Precautions	TMEM160 Antibody (N-term) is for research use only and not for use in diagnostic or therapeutic procedures.

## Protein Information

---

Name	TMEM160 ( <a href="#">HGNC:26042</a> )
Cellular Location	Mitochondrion inner membrane; Multi-pass membrane protein

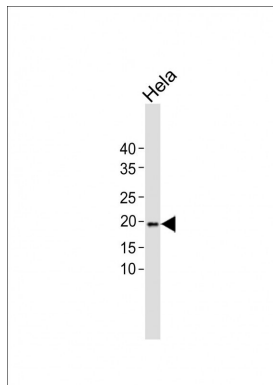
## References

---

Ota T.,et al.Nat. Genet. 36:40-45(2004).  
Burkard T.R.,et al.BMC Syst. Biol. 5:17-17(2011).

## Images

---



All lanes: Anti-TMEM160 Antibody (N-term) at 1:500 dilution + Hela whole cell lysate Lysates/proteins at 20 µg per lane. Secondary: Goat Anti-Rabbit IgG, (H+L), Peroxidase conjugated (ASP1615) at 1/15000 dilution. Observed band size: 19 KDa Blocking/Dilution buffer: 5% NFDM/TBST.

Please note: All products are 'FOR RESEARCH USE ONLY. NOT FOR USE IN DIAGNOSTIC OR THERAPEUTIC PROCEDURES'.