

## (Mouse) Eras Antibody (N-term)

Purified Rabbit Polyclonal Antibody (Pab)

Catalog # AP21063a

### Product Information

---

<b>Application</b>	WB, FC, E
<b>Primary Accession</b>	<a href="#">Q7TN89</a>
<b>Reactivity</b>	Mouse
<b>Host</b>	Rabbit
<b>Clonality</b>	Polyclonal
<b>Isotype</b>	Rabbit IgG
<b>Clone Names</b>	RB51538
<b>Calculated MW</b>	24321

### Additional Information

---

<b>Gene ID</b>	353283
<b>Other Names</b>	GTPase ERas, E-Ras, Embryonic stem cell-expressed Ras, Eras
<b>Target/Specificity</b>	This (Mouse) Eras antibody is generated from a rabbit immunized with a KLH conjugated synthetic peptide between 19-52 amino acids from the N-terminal region of mouse Eras.
<b>Dilution</b>	WB~~1:1000 FC~~1:25 E~~Use at an assay dependent concentration.
<b>Format</b>	Purified polyclonal antibody supplied in PBS with 0.09% (W/V) sodium azide. This antibody is purified through a protein A column, followed by peptide affinity purification.
<b>Storage</b>	Maintain refrigerated at 2-8°C for up to 2 weeks. For long term storage store at -20°C in small aliquots to prevent freeze-thaw cycles.
<b>Precautions</b>	(Mouse) Eras Antibody (N-term) is for research use only and not for use in diagnostic or therapeutic procedures.

### Protein Information

---

<b>Name</b>	Eras
<b>Function</b>	Ras proteins bind GDP/GTP and possess intrinsic GTPase activity. Plays an important role in the tumor-like growth properties of embryonic stem cells.
<b>Cellular Location</b>	Cell membrane; Lipid-anchor; Cytoplasmic side
<b>Tissue Location</b>	Expressed in several undifferentiated mouse embryonic stem cell lines.

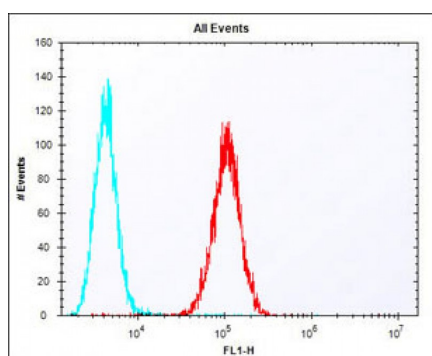
## Background

Ras proteins bind GDP/GTP and possess intrinsic GTPase activity. Plays an important role in the tumor-like growth properties of embryonic stem cells.

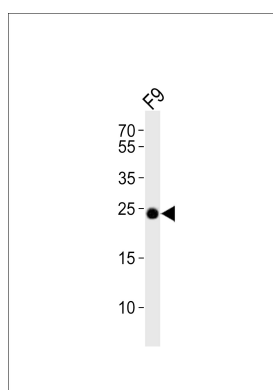
## References

Takahashi K., et al. Nature 423:541-545(2003).  
Carninci P., et al. Science 309:1559-1563(2005).

## Images



Overlay histogram showing F9 cells stained with AP21063a (red line). The cells were fixed with 2% paraformaldehyde (10 min) and then permeabilized with 90% methanol for 10 min. The cells were then incubated in 2% bovine serum albumin to block non-specific protein-protein interactions followed by the antibody (AP21063a, 1:25 dilution) for 60 min at 37°C. The secondary antibody used was Alexa Fluor® 488 goat anti-rabbit IgG (H+L) (1583138) at 1/400 dilution for 40 min at 37°C. Isotype control antibody (blue line) was rabbit IgG1 (1µg/1x10<sup>6</sup> cells) used under the same conditions. Acquisition of >10, 000 events was performed.



Western blot analysis of lysate from mouse F9 cell line, using Eras Antibody (N-term)(Cat. #AP21063a). AP21063a was diluted at 1:1000. A goat anti-rabbit IgG H&L(HRP) at 1:10000 dilution was used as the secondary antibody. Lysate at 20ug.

Please note: All products are 'FOR RESEARCH USE ONLY. NOT FOR USE IN DIAGNOSTIC OR THERAPEUTIC PROCEDURES'.