

# (Mouse) Cldn6 Antibody (C-term)

Purified Rabbit Polyclonal Antibody (Pab)

Catalog # AP21069a

## Product Information

---

<b>Application</b>	WB, E
<b>Primary Accession</b>	<a href="#">Q9Z262</a>
<b>Reactivity</b>	Human, Mouse
<b>Host</b>	Rabbit
<b>Clonality</b>	Polyclonal
<b>Isotype</b>	Rabbit IgG
<b>Clone Names</b>	RB51535
<b>Calculated MW</b>	23388

## Additional Information

---

<b>Gene ID</b>	54419
<b>Other Names</b>	Claudin-6, Skullin, Cldn6
<b>Target/Specificity</b>	This mouse Cldn6 antibody is generated from a rabbit immunized with a KLH conjugated synthetic peptide between 146-180 amino acids from the C-terminal region of mouse Cldn6.
<b>Dilution</b>	WB~~1:1000 E~~Use at an assay dependent concentration.
<b>Format</b>	Purified polyclonal antibody supplied in PBS with 0.09% (W/V) sodium azide. This antibody is purified through a protein A column, followed by peptide affinity purification.
<b>Storage</b>	Maintain refrigerated at 2-8°C for up to 2 weeks. For long term storage store at -20°C in small aliquots to prevent freeze-thaw cycles.
<b>Precautions</b>	(Mouse) Cldn6 Antibody (C-term) is for research use only and not for use in diagnostic or therapeutic procedures.

## Protein Information

---

<b>Name</b>	Cldn6
<b>Function</b>	Plays a major role in tight junction-specific obliteration of the intercellular space, through calcium-independent cell-adhesion activity.
<b>Cellular Location</b>	Cell junction, tight junction. Cell membrane; Multi-pass membrane protein
<b>Tissue Location</b>	Expressed mostly in embryonic tissues.

## Background

---

Plays a major role in tight junction-specific obliteration of the intercellular space, through calcium-independent cell-adhesion activity (By similarity).

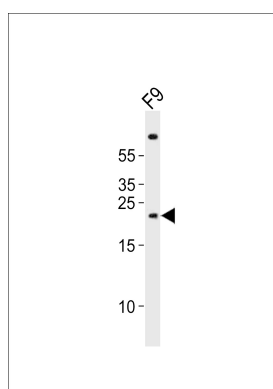
## References

---

Morita K.,et al.Proc. Natl. Acad. Sci. U.S.A. 96:511-516(1999).  
Troy T.,et al.Submitted (FEB-1999) to the EMBL/GenBank/DBJ databases.  
Carninci P.,et al.Science 309:1559-1563(2005).  
Itoh M.,et al.J. Cell Biol. 147:1351-1363(1999).

## Images

---



Western blot analysis of lysate from mouse F9 cell line, using (Mouse) Cldn6 Antibody (C-term)(Cat. #AP21069a). AP21069a was diluted at 1:1000. A goat anti-rabbit IgG H&L(HRP) at 1:10000 dilution was used as the secondary antibody. Lysate at 20ug.

Please note: All products are 'FOR RESEARCH USE ONLY. NOT FOR USE IN DIAGNOSTIC OR THERAPEUTIC PROCEDURES'.