

MTTP Antibody (C-term)

Purified Rabbit Polyclonal Antibody (Pab)

Catalog # AP21081a

Product Information

Application	WB, FC, E
Primary Accession	P55157
Reactivity	Human
Host	Rabbit
Clonality	Polyclonal
Isotype	Rabbit IgG
Clone Names	RB51778
Calculated MW	99351

Additional Information

Gene ID	4547
Other Names	Microsomal triglyceride transfer protein large subunit, MTTP, MTP
Target/Specificity	This MTTP antibody is generated from a rabbit immunized with a KLH conjugated synthetic peptide between 878-911 amino acids from the C-terminal region of human MTTP.
Dilution	WB~~1:1000 FC~~1:25 E~~Use at an assay dependent concentration.
Format	Purified polyclonal antibody supplied in PBS with 0.09% (W/V) sodium azide. This antibody is purified through a protein A column, followed by peptide affinity purification.
Storage	Maintain refrigerated at 2-8°C for up to 2 weeks. For long term storage store at -20°C in small aliquots to prevent freeze-thaw cycles.
Precautions	MTTP Antibody (C-term) is for research use only and not for use in diagnostic or therapeutic procedures.

Protein Information

Name	MTTP
Synonyms	MTP
Function	Catalyzes the transport of triglyceride, cholesteryl ester, and phospholipid between phospholipid surfaces (PubMed: 15897609 , PubMed: 16478722 , PubMed: 22236406 , PubMed: 23475612 , PubMed: 25108285 , PubMed: 26224785 , PubMed: 8876250 , PubMed: 8939939). Required for the

assembly and secretion of plasma lipoproteins that contain apolipoprotein B (PubMed:[16478722](#), PubMed:[23475612](#), PubMed:[26224785](#), PubMed:[8876250](#), PubMed:[8939939](#)). May be involved in regulating cholesteryl ester biosynthesis in cells that produce lipoproteins (By similarity).

Cellular Location

Endoplasmic reticulum. Golgi apparatus. Note=Colocalizes with P4HB/PDI in the endoplasmic reticulum (PubMed:23475612, PubMed:26224785)

Tissue Location

Liver and small intestine. Also found in ovary, testis and kidney.

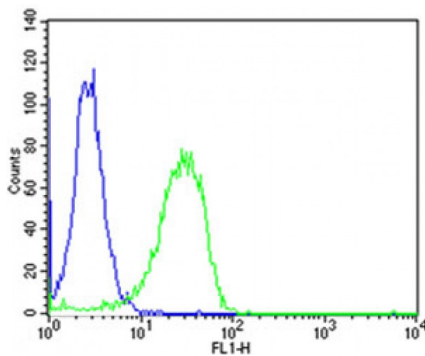
Background

Catalyzes the transport of triglyceride, cholesteryl ester, and phospholipid between phospholipid surfaces. Required for the secretion of plasma lipoproteins that contain apolipoprotein B.

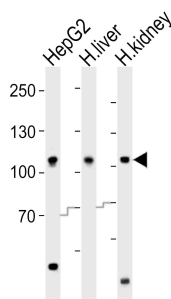
References

Shoulders C.C.,et al.Hum. Mol. Genet. 2:2109-2116(1993).
Sharp D.,et al.Nature 365:65-69(1993).
Sharp D.,et al.Biochemistry 33:9057-9061(1994).
Ota T.,et al.Nat. Genet. 36:40-45(2004).
Hagan D.L.,et al.J. Biol. Chem. 269:28737-28744(1994).

Images



Flow cytometric analysis of HeLa cells using MTTP Antibody (C-term)(green, Cat#AP21081a) compared to an isotype control of rabbit IgG(blue). AP21081a was diluted at 1:25 dilution. An Alexa Fluor® 488 goat anti-rabbit IgG at 1:400 dilution was used as the secondary antibody.



Western blot analysis of lysates from HepG2 cell line, human liver, human kidney tissue (from left to right), using MTTP Antibody (C-term)(Cat. #AP21081a). AP21081a was diluted at 1:1000 at each lane. A goat anti-rabbit IgG H&L(HRP) at 1:10000 dilution was used as the secondary antibody. Lysates at 20ug per lane.

Please note: All products are 'FOR RESEARCH USE ONLY. NOT FOR USE IN DIAGNOSTIC OR THERAPEUTIC PROCEDURES'.