

(DANRE) fundc1 Antibody (Center)

Purified Rabbit Polyclonal Antibody (Pab)

Catalog # AP21085a

Product Information

Application	WB, E
Primary Accession	Q6DH87
Reactivity	Zebrafish
Host	Rabbit
Clonality	Polyclonal
Isotype	Rabbit IgG
Clone Names	RB51998
Calculated MW	16744

Additional Information

Gene ID	436984
Other Names	FUN14 domain-containing protein 1, fundc1
Target/Specificity	This DANRE fundc1 antibody is generated from a rabbit immunized with a KLH conjugated synthetic peptide between 94-126 amino acids from DANRE fundc1.
Dilution	WB~~1:1000 E~~Use at an assay dependent concentration.
Format	Purified polyclonal antibody supplied in PBS with 0.09% (W/V) sodium azide. This antibody is purified through a protein A column, followed by peptide affinity purification.
Storage	Maintain refrigerated at 2-8°C for up to 2 weeks. For long term storage store at -20°C in small aliquots to prevent freeze-thaw cycles.
Precautions	(DANRE) fundc1 Antibody (Center) is for research use only and not for use in diagnostic or therapeutic procedures.

Protein Information

Name	fundc1
Function	Acts as an activator of hypoxia-induced mitophagy, an important mechanism for mitochondrial quality control.
Cellular Location	Mitochondrion outer membrane; Multi-pass membrane protein

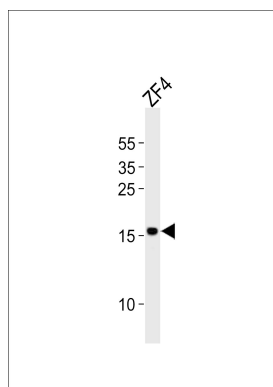
Background

Acts as an activator of hypoxia-induced mitophagy, an important mechanism for mitochondrial quality control (By similarity).

References

Howe K.,et al.Nature 496:498-503(2013).

Images



Western blot analysis of lysate from ZF4 cell line, using DANRE fundc1 Antibody (Center)(Cat. #AP21085a). AP21085a was diluted at 1:1000. A goat anti-rabbit IgG H&L(HRP) at 1:10000 dilution was used as the secondary antibody. Lysate at 20ug.

Please note: All products are 'FOR RESEARCH USE ONLY. NOT FOR USE IN DIAGNOSTIC OR THERAPEUTIC PROCEDURES'.