

(Mouse) Eras Antibody (N-term)

Purified Rabbit Polyclonal Antibody (Pab)

Catalog # AP21087a

Product Information

Application	WB, FC, E
Primary Accession	Q7TN89
Reactivity	Mouse
Host	Rabbit
Clonality	Polyclonal
Isotype	Rabbit IgG
Clone Names	RB51537
Calculated MW	24321

Additional Information

Gene ID	353283
Other Names	GTPase ERas, E-Ras, Embryonic stem cell-expressed Ras, Eras
Target/Specificity	This Mouse Eras antibody is generated from a rabbit immunized with a KLH conjugated synthetic peptide between 19-52 amino acids from the N-terminal region of mouse Eras.
Dilution	WB~~1:1000 FC~~1:25 E~~Use at an assay dependent concentration.
Format	Purified polyclonal antibody supplied in PBS with 0.09% (W/V) sodium azide. This antibody is purified through a protein A column, followed by peptide affinity purification.
Storage	Maintain refrigerated at 2-8°C for up to 2 weeks. For long term storage store at -20°C in small aliquots to prevent freeze-thaw cycles.
Precautions	(Mouse) Eras Antibody (N-term) is for research use only and not for use in diagnostic or therapeutic procedures.

Protein Information

Name	Eras
Function	Ras proteins bind GDP/GTP and possess intrinsic GTPase activity. Plays an important role in the tumor-like growth properties of embryonic stem cells.
Cellular Location	Cell membrane; Lipid-anchor; Cytoplasmic side
Tissue Location	Expressed in several undifferentiated mouse embryonic stem cell lines.

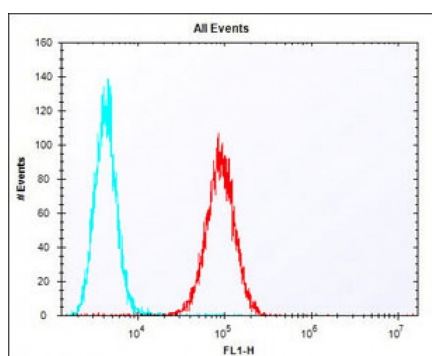
Background

Ras proteins bind GDP/GTP and possess intrinsic GTPase activity. Plays an important role in the tumor-like growth properties of embryonic stem cells.

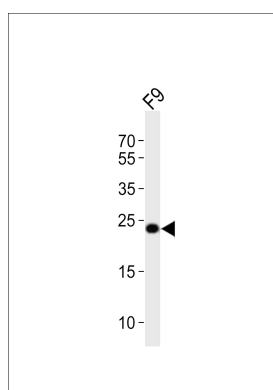
References

Takahashi K., et al. Nature 423:541-545(2003).
Carninci P., et al. Science 309:1559-1563(2005).

Images



Overlay histogram showing F9 cells stained with AP21087a (red line). The cells were fixed with 2% paraformaldehyde (10 min) and then permeabilized with 90% methanol for 10 min. The cells were then incubated in 2% bovine serum albumin to block non-specific protein-protein interactions followed by the antibody (AP21087a, 1:25 dilution) for 60 min at 37°C. The secondary antibody used was Alexa Fluor® 488 goat anti-rabbit IgG (H+L) (1583138) at 1/400 dilution for 40 min at 37°C. Isotype control antibody (blue line) was rabbit IgG1 (1µg/1x10⁶ cells) used under the same conditions. Acquisition of >10, 000 events was performed.



Western blot analysis of lysate from mouse F9 cell line, using Eras Antibody (N-term)(Cat. #AP21087a). AP21087a was diluted at 1:1000. A goat anti-rabbit IgG H&L(HRP) at 1:10000 dilution was used as the secondary antibody. Lysate at 20ug.

Please note: All products are 'FOR RESEARCH USE ONLY. NOT FOR USE IN DIAGNOSTIC OR THERAPEUTIC PROCEDURES'.