

OLIG3 Antibody (N-term)

Purified Rabbit Polyclonal Antibody (Pab)

Catalog # AP21100a

Product Information

Application	WB, E
Primary Accession	Q7RTU3
Reactivity	Human, Mouse
Host	Rabbit
Clonality	Polyclonal
Isotype	Rabbit IgG
Clone Names	RB50878
Calculated MW	29358

Additional Information

Gene ID	167826
Other Names	Oligodendrocyte transcription factor 3, Oligo3, Class B basic helix-loop-helix protein 7, bHLHb7, Class E basic helix-loop-helix protein 20, bHLHe20, OLIG3, BHLHB7, BHLHE20
Target/Specificity	This OLIG3 antibody is generated from a rabbit immunized with a KLH conjugated synthetic peptide between 15-48 amino acids from the N-terminal region of human OLIG3.
Dilution	WB~~1:1000 E~~Use at an assay dependent concentration.
Format	Purified polyclonal antibody supplied in PBS with 0.09% (W/V) sodium azide. This antibody is purified through a protein A column, followed by peptide affinity purification.
Storage	Maintain refrigerated at 2-8°C for up to 2 weeks. For long term storage store at -20°C in small aliquots to prevent freeze-thaw cycles.
Precautions	OLIG3 Antibody (N-term) is for research use only and not for use in diagnostic or therapeutic procedures.

Protein Information

Name	OLIG3
Synonyms	BHLHB7, BHLHE20
Function	May determine the distinct specification program of class A neurons in the dorsal part of the spinal cord and suppress specification of class B neurons.

Background

May determine the distinct specification program of class A neurons in the dorsal part of the spinal cord and suppress specification of class B neurons.

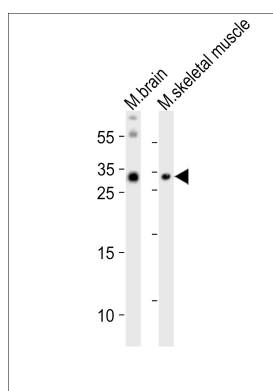
References

Ota T.,et al.Nat. Genet. 36:40-45(2004).

Mungall A.J.,et al.Nature 425:805-811(2003).

McLellan A.S.,et al.Mech. Dev. 119:S285-S291(2002).

Images



Western blot analysis of lysates from mouse brain, mouse skeletal muscle tissue lysate (from left to right), using OLIG3 Antibody (N-term)(Cat. #AP21100a). AP21100a was diluted at 1:1000 at each lane. A goat anti-rabbit IgG H&L(HRP) at 1:10000 dilution was used as the secondary antibody. Lysates at 20ug per lane.

Please note: All products are 'FOR RESEARCH USE ONLY. NOT FOR USE IN DIAGNOSTIC OR THERAPEUTIC PROCEDURES'.