

CHRM1 Antibody (C-term)

Purified Rabbit Polyclonal Antibody (Pab)

Catalog # AP21104a

Product Information

Application	WB, E
Primary Accession	P11229
Reactivity	Human, Rat, Mouse
Host	Rabbit
Clonality	Polyclonal
Isotype	Rabbit IgG
Clone Names	RB51455
Calculated MW	51421

Additional Information

Gene ID	1128
Other Names	Muscarinic acetylcholine receptor M1, CHRM1
Target/Specificity	This CHRM1 antibody is generated from a rabbit immunized with a KLH conjugated synthetic peptide between 331-367 amino acids from the C-terminal region of human CHRM1.
Dilution	WB~~1:1000 E~~Use at an assay dependent concentration.
Format	Purified polyclonal antibody supplied in PBS with 0.09% (W/V) sodium azide. This antibody is purified through a protein A column, followed by peptide affinity purification.
Storage	Maintain refrigerated at 2-8°C for up to 2 weeks. For long term storage store at -20°C in small aliquots to prevent freeze-thaw cycles.
Precautions	CHRM1 Antibody (C-term) is for research use only and not for use in diagnostic or therapeutic procedures.

Protein Information

Name	CHRM1
Function	The muscarinic acetylcholine receptor mediates various cellular responses, including inhibition of adenylate cyclase, breakdown of phosphoinositides and modulation of potassium channels through the action of G proteins. Primary transducing effect is Pi turnover.
Cellular Location	Cell membrane; Multi-pass membrane protein. Postsynaptic cell membrane;

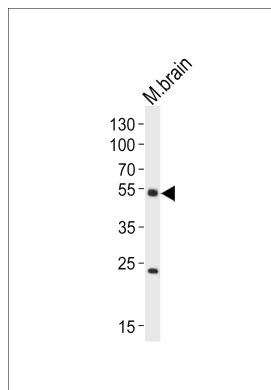
Background

The muscarinic acetylcholine receptor mediates various cellular responses, including inhibition of adenylate cyclase, breakdown of phosphoinositides and modulation of potassium channels through the action of G proteins. Primary transducing effect is Pi turnover.

References

Allard W.J.,et al.Nucleic Acids Res. 15:10604-10604(1987).
Chapman C.G.,et al.Nucleic Acids Res. 18:2191-2191(1990).
Peralta E.G.,et al.EMBO J. 6:3923-3929(1987).
Puhl H.L. III,et al.Submitted (APR-2002) to the EMBL/GenBank/DDBJ databases.
Arden J.R.,et al.Biochem. Biophys. Res. Commun. 188:1111-1115(1992).

Images



Western blot analysis of lysate from mouse brain tissue lysate, using CHRM1 Antibody (C-term)(Cat. #AP21104a). AP21104a was diluted at 1:1000. A goat anti-rabbit IgG H&L(HRP) at 1:10000 dilution was used as the secondary antibody. Lysate at 20ug.

Please note: All products are 'FOR RESEARCH USE ONLY. NOT FOR USE IN DIAGNOSTIC OR THERAPEUTIC PROCEDURES'.